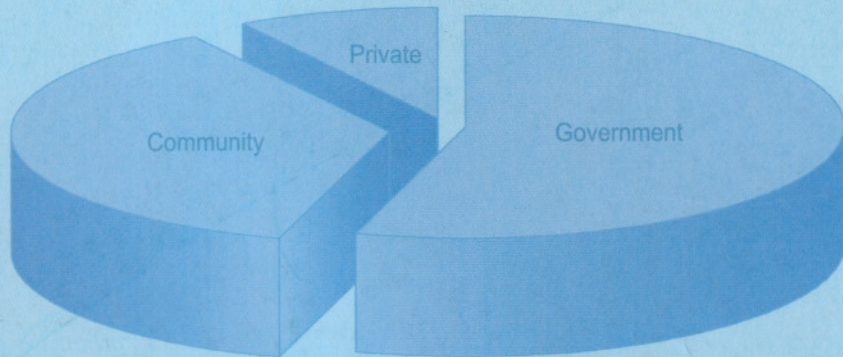


EDUCATION STATISTICS 2004



**MINISTRY OF EDUCATION
REPUBLIC OF MALDIVES**

TABLE OF CONTENTS

	Page
2004	1
2004	3
2004	4
2004	6
2004	8
2004	10
2004	12
2004	14
2004	15
2004	16
2004	17
2004	18
2004	19
2004	20
2004	21
2004	22
2004	23
2004	24
2004	25
2004	26
2004	27
2004	28
2004	29
2004	30
2004	31
2004	32
2004	33
2004	34
2004	35
2004	36
2004	37
2004	39
2004	40
2004	41
2004	42
2004	43
2004	46
2004	47

EDUCATION STATISTICS

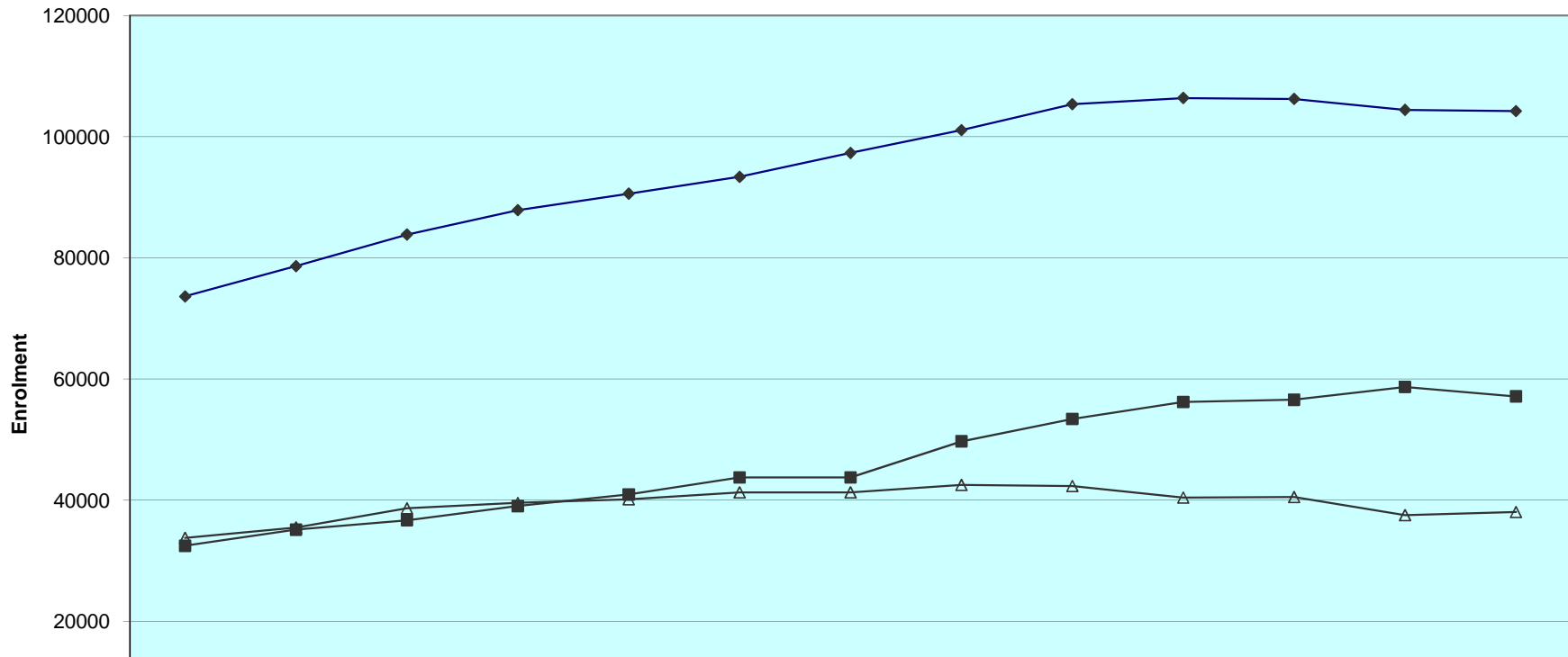
Republic of Maldives

ދިވެހިރާއްޖޭގެ ޖުމްހޫރިއްޔާ ގުޅިގެން ސަރުކާރުގެ ޖުމްހޫރިއްޔާ ގުޅިގެން (މަސަލާ ގަވާއިދު)
STUDENT ENROLMENT IN MALDIVES (GROSS)
(1992 - 2004)

Provision	1992	1993	1994	1995	1996	1997	1998	1999	2000	2001	2002	2003	2004
Republic													
Total	73642	78639	83855	87878	90597	93375	97323	101081	105356	106391	106220	104408	104214
Government Schools	32475	35138	36693	39032	40935	43757	46352	49721	53413	56224	56579	58682	57139
Community Schools	33779	35486	38662	39565	40153	41295	42159	42524	42352	40448	40519	37540	38042
Private Schools	7388	8015	8500	9281	9509	8323	8812	8836	9591	9719	9122	8186	9033
Male'													
Total	22802	23177	23500	24570	25641	26190	27057	27714	28547	28306	28243	28950	29307
Government Schools	12568	12962	13226	13255	13567	14124	14588	15167	15820	16456	16845	17838	18278
Community Schools	6014	5838	5810	6368	7418	7875	8348	8382	8326	7749	8030	7737	7559
Private Schools	4220	4377	4464	4947	4656	4191	4121	4165	4401	4101	3368	3375	3470
Atolls													
Total	50840	55462	60355	63308	64956	67185	70266	73367	76809	78085	77977	75458	74907
Government Schools	19907	22176	23467	25777	27368	29633	31764	34554	37593	39768	39734	40844	38861
Community Schools	27765	29648	32852	33197	32735	33420	33811	34142	34026	32699	32489	29803	30483
Private Schools	3168	3638	4036	4334	4853	4132	4691	4671	5190	5618	5754	4811	5563

ދިވެހިރާއްޖޭގެ ޖުމްހޫރީ ޕާރލަމެންޓްގެ ސަރުކާރުގެ ދަށުން (މަސަބަބާ)
(ނަންބަރުގެ ތެރޭގައި ބަޔާންކުރި ސަރުކާރުގެ ތެރޭގައި)

STUDENT ENROLMENT IN MALDIVES (GROSS)
(BY TYPE OF PROVISION)
1992 - 2004



بهرمنه بهرمنه بهرمنه بهرمنه بهرمنه بهرمنه بهرمنه بهرمنه بهرمنه بهرمنه
 ENROLMENT TRENDS BY LEVEL
 (1999 - 2004)

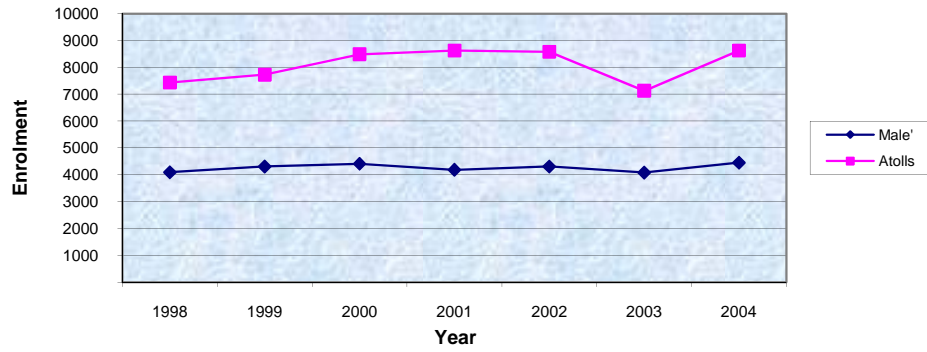
LEVEL	1999			2000			2001			2002			2003			2004		
	FEMALE	MALE	TOTAL	FEMALE	MALE	TOTAL	FEMALE	MALE	TOTAL	FEMALE	MALE	TOTAL	FEMALE	MALE	TOTAL	FEMALE	MALE	TOTAL
Pre - Primary (NURS, LKG, UKG)	5815	6216	12031	6324	6570	12894	6335	6474	12809	6323	6563	12886	5540	5666	11206	6457	6618	13075
Primary (Grades 1 - 7)	36203	37847	74050	35764	37758	73522	34384	36670	71054	32801	35441	68242	31621	34548	66169	30160	33140	63300
Lower Secondary (Grades 8 - 10)	7471	7060	14531	9518	8736	18254	11368	10276	21644	12656	11247	23903	13594	11892	25486	13896	12245	26141
Higher Secondary (Grades 11 - 12)	192	265	457	274	364	638	330	494	824	504	627	1131	709	772	1481	765	857	1622
Special Classes*	6	6	12	21	27	48	31	29	60	24	34	58	29	37	66	31	45	76
	49687	51394	101081	51901	53455	105356	52448	53943	106391	52308	53912	106220	51493	52915	104408	51309	52905	104214

* Special classes conducted for children with disabilities

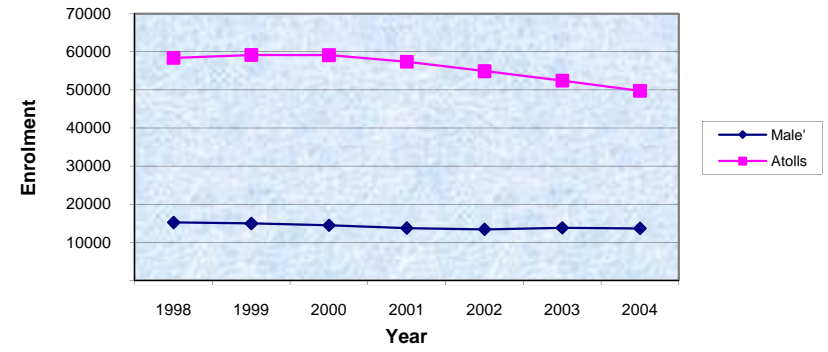
(2000 - 2004) ENROLMENT TRENDS BY LEVEL - MALE AND ATOLLS
 ENROLMENT TRENDS BY LEVEL - MALE AND ATOLLS
 (2000 - 2004)

LEVEL	2000						2001						2002						2003						2004					
	MALE			ATOLLS			MALE			ATOLLS			MALE			ATOLLS			MALE			ATOLLS			MALE			ATOLLS		
	FEMALE	MALE	TOTAL	FEMALE	MALE	TOTAL	FEMALE	MALE	TOTAL	FEMALE	MALE	TOTAL	FEMALE	MALE	TOTAL	FEMALE	MALE	TOTAL	FEMALE	MALE	TOTAL	FEMALE	MALE	TOTAL	FEMALE	MALE	TOTAL	FEMALE	MALE	TOTAL
Pre-Primary (Nur, LKG, UKG)													2135	2170	4305	4188	4393	8581	1998	2081	4079	3542	3585	7127	2209	2241	4450	4248	4377	8625
Primary (Grades 1 - 7)	7150	7285	14435	28614	30473	59087	6894	6793	13687	27490	29877	57367	6695	6660	13355	26106	28781	54887	6847	6916	13763	24774	27632	52406	6750	6856	13606	23410	26284	49694
Lower Secondary (Grades 8 - 10)	4613	4405	9018	4905	4331	9236	4975	4576	9551	6393	5700	12093	5165	4332	9497	7491	6915	14406	5460	4343	9803	8134	7549	15683	5486	4328	9814	8410	7917	16327
Higher Secondary (Grades 11 - 12)	274	364	638				330	494	824				457	571	1028	47	56	103	597	642	1239	112	130	242	641	720	1361	124	137	261
Special Classes*													24	34	58				29	37	66				31	45	76			
TOTAL	12037	12054	24091	33519	34804	68323	12199	11863	24062	33883	35577	69460	14476	13767	28243	37832	40145	77977	14931	14019	28950	36562	38896	75458	15117	14190	29307	36192	38715	74907

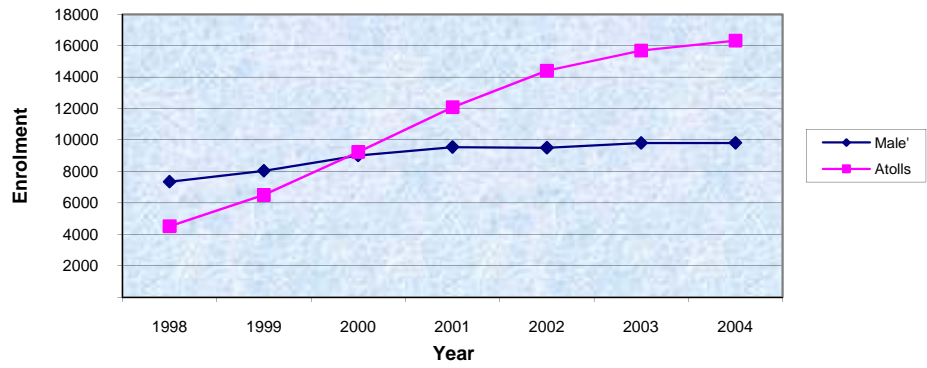
Pre-Primary



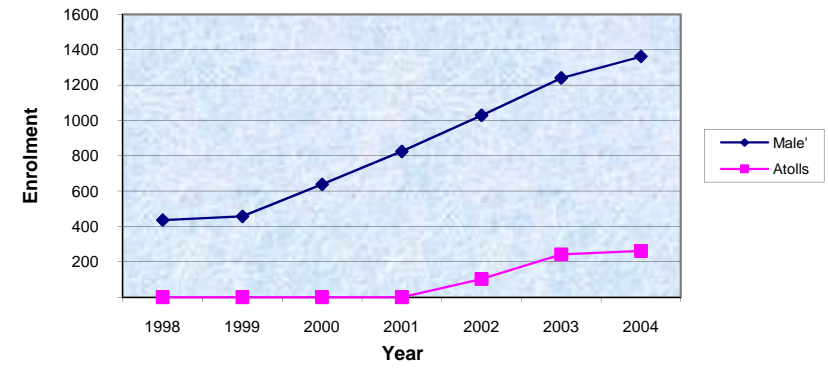
Primary



Lower Secondary



Higher Secondary



ދިވެހިރާއްޖޭގެ ޖުމްހޫރިއްޔާ ގުޅިގެން
 ENROLMENT BY LEVEL AND TYPE
 (MARCH 2004)

LEVEL	Pre-Primary			Primary			Lower Secondary			Higher Secondary			Special Classes			Total			
	Female	Male	Total	Female	Male	Total	Female	Male	Total	Female	Male	Total	Female	Male	Total	Female	Male	Total	
REPUBLIC	Government	34	26	60	18436	20269	38705	8698	8040	16738	740	820	1560	31	45	76	27939	29200	57139
	Community	4025	4007	8032	11247	12358	23605	3463	2942	6405	0	0	0	0	0	0	18735	19307	38042
	Private	2398	2585	4983	477	513	990	1735	1263	2998	25	37	62	0	0	0	4635	4398	9033
	Total	6457	6618	13075	30160	33140	63300	13896	12245	26141	765	857	1622	31	45	76	51309	52905	104214
MALE'	Government	0	0	0	5779	5987	11766	2636	2501	5137	616	683	1299	31	45	76	9062	9216	18278
	Community	2048	2050	4098	677	566	1243	1349	869	2218	0	0	0	0	0	0	4074	3485	7559
	Private	161	191	352	294	303	597	1501	958	2459	25	37	62	0	0	0	1981	1489	3470
	Total	2209	2241	4450	6750	6856	13606	5486	4328	9814	641	720	1361	31	45	76	15117	14190	29307
ATOLLS	Government	34	26	60	12657	14282	26939	6062	5539	11601	124	137	261	0	0	0	18877	19984	38861
	Community	1977	1957	3934	10570	11792	22362	2114	2073	4187	0	0	0	0	0	0	14661	15822	30483
	Private	2237	2394	4631	183	210	393	234	305	539	0	0	0	0	0	0	2654	2909	5563
	Total	4248	4377	8625	23410	26284	49694	8410	7917	16327	124	137	261	0	0	0	36192	38715	74907

Pre-Primary: Nursery, LKG, UKG

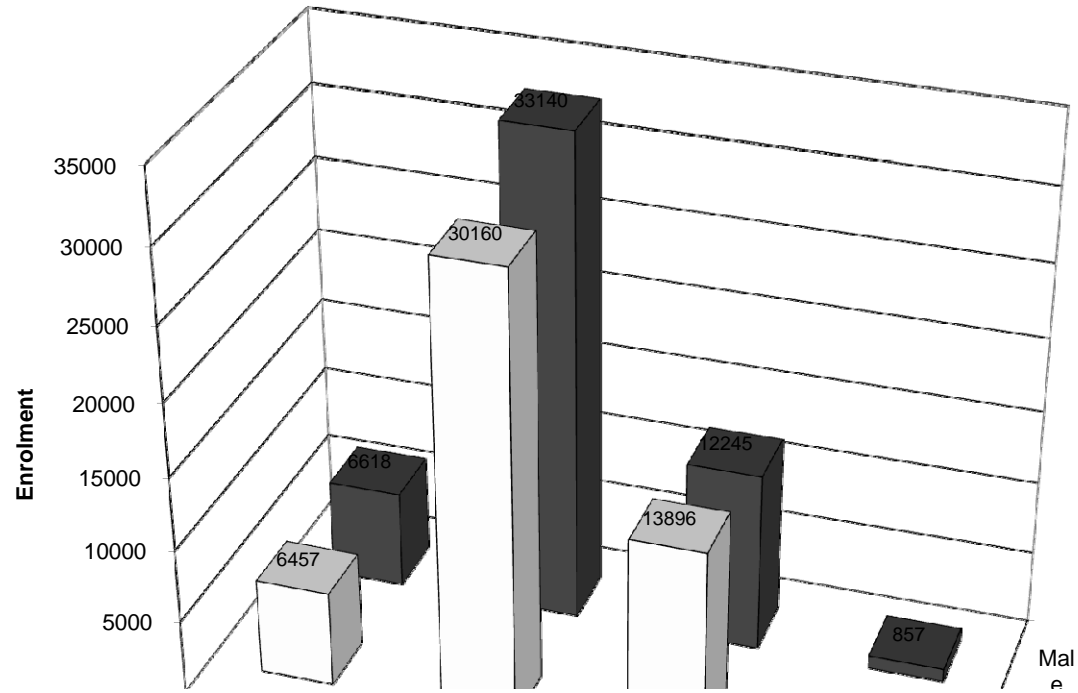
Primary: Grades 1 - 7

Lower Secondary: Grades 8 - 10

Higher Secondary: Grades 11 - 12

ދިވެހިސަރުކާރުގެ ގެޒެޓް ގައި ބަޔާންކޮށްފައިވާ ގޮތުން

TOTAL STUDENT ENROLMENT IN THE MALDIVES BY LEVEL
(MARCH 2004)

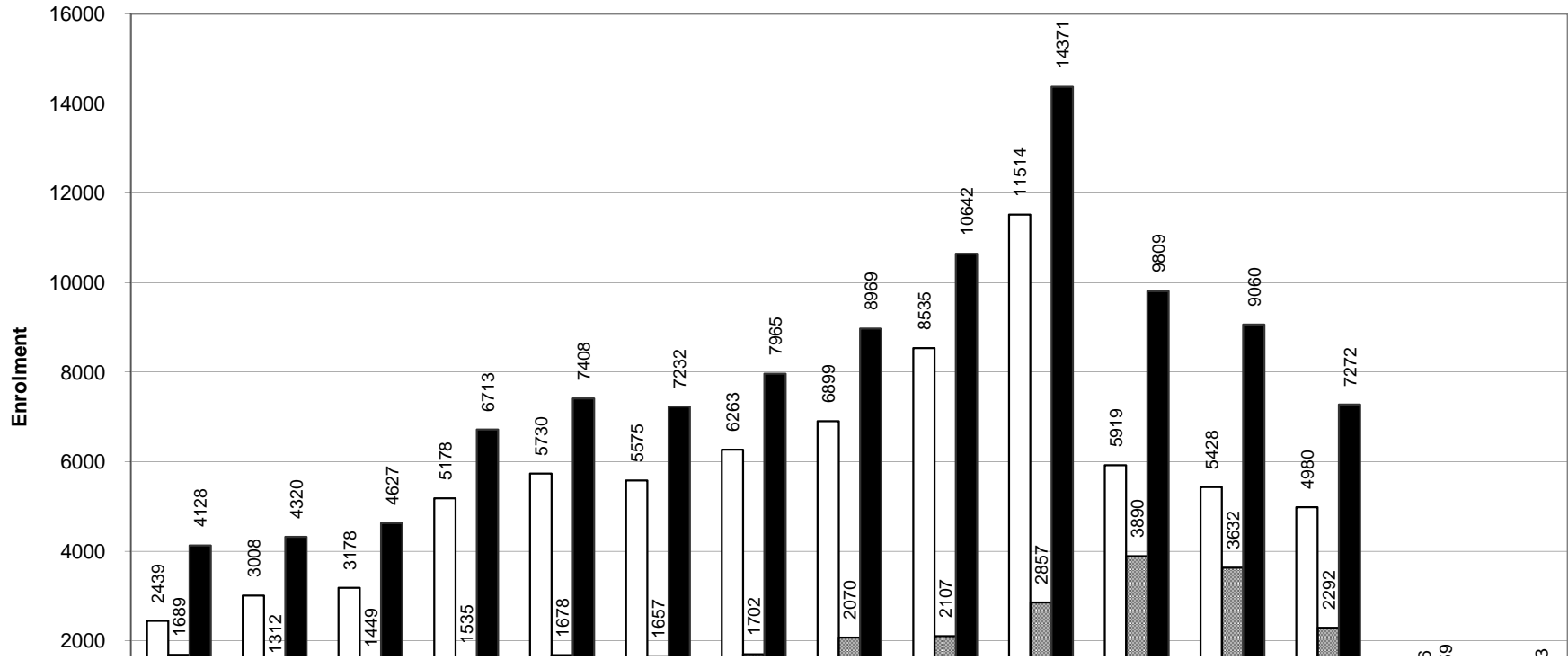


ދިވެހިސަރުކާރުގެ ގެޒެޓް ގައި ބަޔާންކޮށްފައިވާ ގޮތުން

ENROLMENT IN MALE' AND ATOLLS BY GRADE AND GENDER
(MARCH 2004)

Name of Atoll	NURS		LKG		UKG		GR. 1		GR. 2		GR. 3		GR. 4		GR. 5		GR. 6		GR. 7		GR. 8		GR. 9		GR. 10		GR. 11		GR. 12		Special		SUBTOTAL		TOTAL	% National
	F	M	F	M	F	M	F	M	F	M	F	M	F	M	F	M	F	M	F	M	F	M	F	M	F	M	F	M	F	M	F	M	F	M	Total	
Haa Alifu	104	67	142	130	147	133	171	203	202	223	213	193	217	253	261	303	316	391	468	518	206	189	223	170	199	167							2869	2940	5809	5.57
Haa Dhaalu	119	125	135	169	157	173	209	243	266	262	245	269	250	289	303	322	325	331	642	722	222	239	184	174	152	108	2	12	14	14			3225	3452	6677	6.41
Shaviyani	43	40	23	20	28	21	161	190	153	206	172	157	179	192	192	193	262	290	301	348	223	251	222	236	230	209							2189	2353	4542	4.36
Noonu	79	66	65	63	85	81	142	155	162	174	159	179	192	233	178	235	266	288	333	352	181	158	160	126	128	108							2130	2218	4348	4.17
Raa	98	100	86	102	120	121	217	227	230	250	232	229	235	263	327	362	341	441	428	438	264	243	246	274	267	215							3091	3265	6356	6.10
Baa	33	40	79	98	70	101	131	127	124	143	105	135	126	156	122	163	186	249	265	309	139	156	162	187	144	160	9	18	3	35			1698	2077	3775	3.62
Lhaviyani	66	68	78	72	63	69	115	109	108	123	116	111	125	140	134	159	190	219	240	287	96	97	99	87	127	99							1557	1640	3197	3.07
Kaafu	69	78	100	120	102	84	96	119	124	125	102	130	123	153	130	167	141	194	231	264	79	73	60	57	68	56							1425	1620	3045	2.92
Alifu Alifu	23	21	30	22	28	32	54	81	69	83	71	73	66	77	48	79	89	114	106	140	48	49	57	31	28	26							717	828	1545	1.48
Alifu Dhaalu	61	57	38	43	29	49	102	105	93	112	98	93	98	108	89	111	143	178	203	264	109	108	106	90	94	106							1263	1424	2687	2.58
Vaavu	3	2	2	1	1		14	15	20	24	13	22	18	18	22	24	34	35	35	47	23	37	23	23	21	26							229	274	503	0.48
Meemu	10	26	17	23	19	19	57	58	55	66	55	60	79	79	84	78	109	93	140	163	78	78	81	73	69	75							853	891	1744	1.67
Faafu	41	41	26	34	33	36	54	53	57	65	69	75	56	57	70	76	77	112	125	106	63	56	67	58	45	46							783	815	1598	1.53
Dhaalu	12	20	12	18	13	15	69	75	76	83	76	81	73	83	80	100	102	141	140	148	90	125	83	81	52	60							878	1030	1908	1.83
Thaa	58	62	83	69	72	86	108	121	133	155	146	143	130	166	145	196	174	230	284	300	138	143	153	152	131	146							1755	1969	3724	3.57
Laamu	41	27	84	68	97	84	146	176	192	187	189	194	194	229	229	269	244	304	351	393	158	167	161	170	194	189							2280	2457	4737	4.55
Gaafu Alifu	47	35	77	86	76	90	124	149	147	142	140	147	150	166	151	161	173	217	216	232	111	116	69	57	81	97							1562	1695	3257	3.13
Gaafu Dhaalu	100	114	117	128	142	134	144	157	194	202	169	189	218	198	226	201	259	291	294	327	213	194	164	185	195	164							2435	2484	4919	4.72
Gnaviyani	50	55	80	81	81	89	124	123	93	108	102	107	150	158	142	147	137	174	209	253	172	115	89	77	140	104							1569	1591	3160	3.03
Seenu	157	181	186	201	211	187	213	241	251	248	263	253	286	280	283	337	300	375	415	477	386	326	385	326	252	202	48	34	48	24			3684	3692	7376	7.08
Male'	860	829	647	665	702	747	782	753	840	838	798	859	829	873	978	1092	1042	1065	1481	1376	2064	1826	2094	1538	1328	964	338	398	303	322	31	45	15117	14190	29307	28.12
Atolls	1214	1225	1460	1548	1574	1604	2451	2727	2749	2981	2735	2840	2965	3298	3216	3683	3868	4667	5426	6088	2999	2920	2794	2634	2617	2363	59	64	65	73	31	45	36192	38715	74907	
TOTAL	2074	2054	2107	2213	2276	2351	3233	3480	3589	3819	3533	3699	3794	4171	4194	4775	4910	5732	6907	7464	5063	4746	4888	4172	3945	3327	397	462	368	395	31	45	51309	52905	104214	100.00

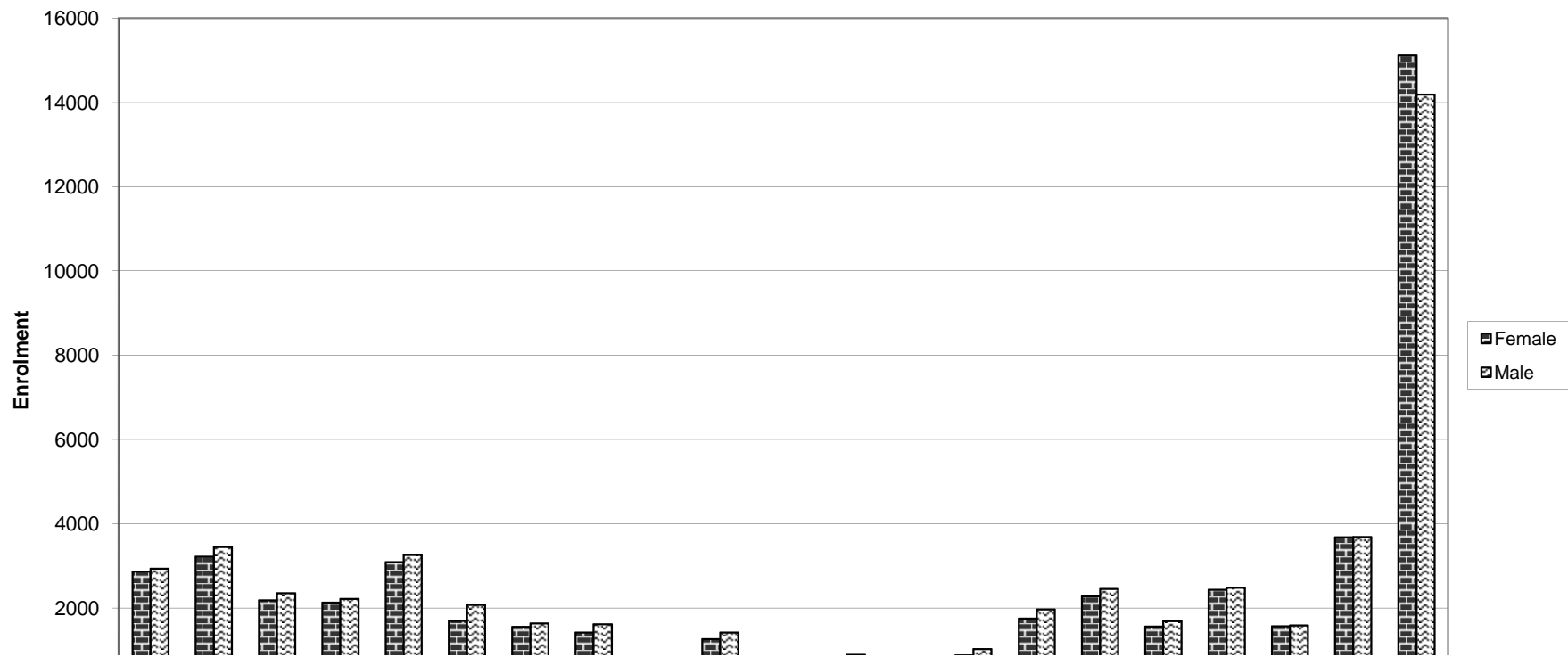
TOTAL ENROLMENT IN MALE' AND ATOLLS BY GRADE
(MARCH 2004)



ދިވެހިރާއްޖޭގެ ބޭރުގެ ރާއްޖޭގެ ރައްދުކުރުމަށް ބޭނުންކުރާ ފަރާތްތަކުގެ ވަނަ ބަޔާން
 ENROLMENT IN MALE' AND ATOLLS BY GENDER
 (MARCH 2004)

Name of Atoll	Female	Male	Total	% Female	% Male	% Total
Haa Alifu	2869	2940	5809	49.39	50.61	5.57
Haa Dhaalu	3225	3452	6677	48.30	51.70	6.41
Shaviyani	2189	2353	4542	48.19	51.81	4.36
Noonu	2130	2218	4348	48.99	51.01	4.17
Raa	3091	3265	6356	48.63	51.37	6.10
Baa	1698	2077	3775	44.98	55.02	3.62
Lhaviyani	1557	1640	3197	48.70	51.30	3.07
Kaafu	1425	1620	3045	46.80	53.20	2.92
Alifu Alifu	717	828	1545	46.41	53.59	1.48
Alifu Dhaalu	1263	1424	2687	47.00	53.00	2.58
Vaavu	229	274	503	45.53	54.47	0.48
Meemu	853	891	1744	48.91	51.09	1.67
Faafu	783	815	1598	49.00	51.00	1.53
Dhaalu	878	1030	1908	46.02	53.98	1.83
Thaa	1755	1969	3724	47.13	52.87	3.57
Laamu	2280	2457	4737	48.13	51.87	4.55
Gaafu Alifu	1562	1695	3257	47.96	52.04	3.13
Gaafu Dhaalu	2435	2484	4919	49.50	50.50	4.72
Gnaviyani	1569	1591	3160	49.65	50.35	3.03
Seenu	3684	3692	7376	49.95	50.05	7.08
Male'	15117	14190	29307	51.58	48.42	28.12
TOTAL	51309	52905	104214	49.23	50.77	100.00

ދިވެހިރާއްޖޭގެ ސަރުކާރުގެ ގެޒެޓްގައި ބަޔާންކޮށްފައިވާ ގޮތުގައި
 ENROLMENT IN MALE' AND ATOLLS BY GENDER
 (MARCH 2004)



ދިވެހިރާއްޖޭގެ ޖުމްހޫރިއްޔުގެ ސަރުކާރުގެ ޕްރޮޖެކްޓްޕްރޮގްރާމް

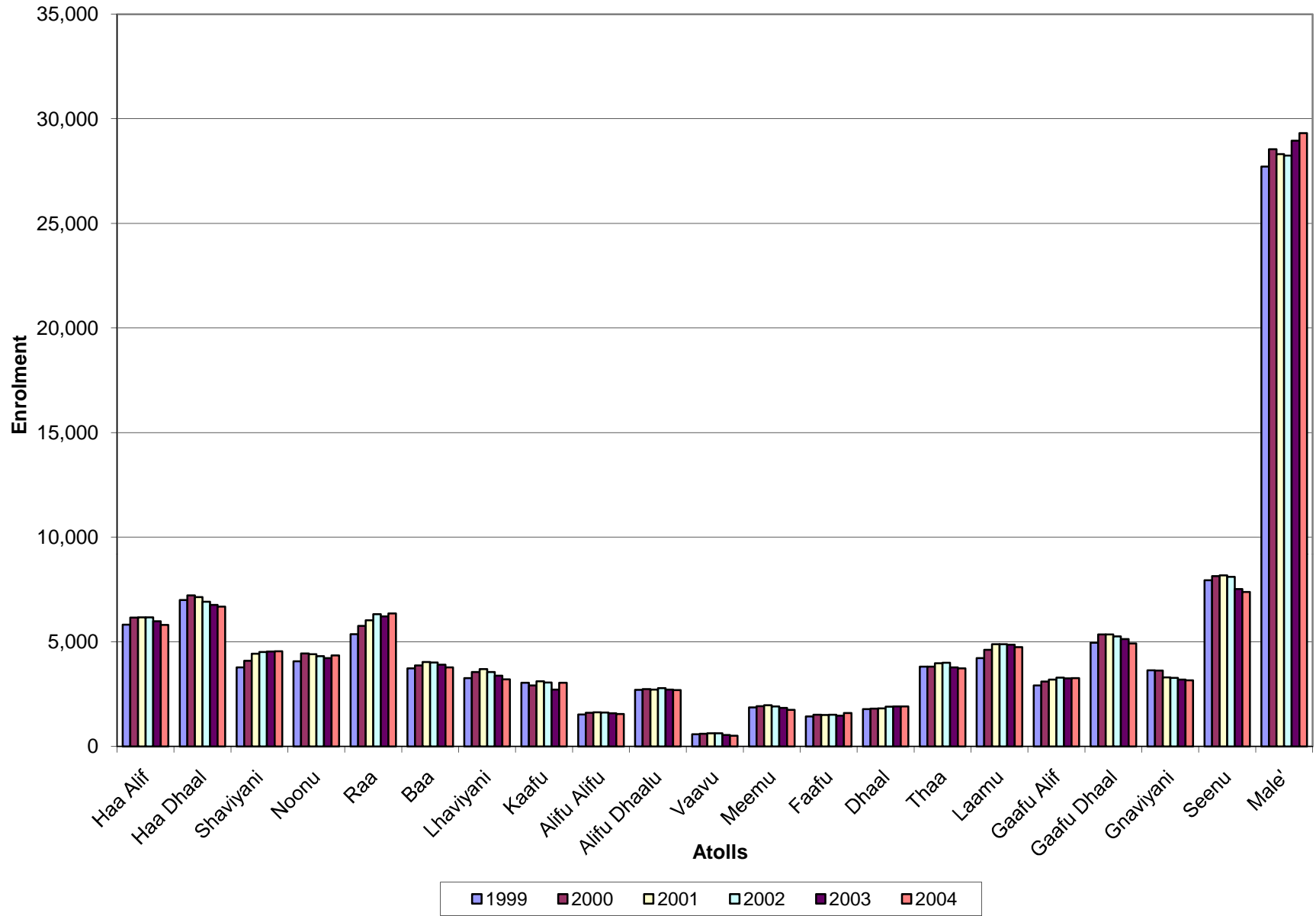
ENROLMENT TRENDS BY MALE' AND ATOLLS

(2003 - 2004)

Name of Atoll	2003			2004								
	Female	change *	Male	change *	Total	change *	Female	change *	Male	change *	Total	change *
Haa Alifu	2,915	-3.86%	3,066	-2.20%	5,981	-3.02%	2,869	-5.38%	2,940	-6.22%	5,809	-5.81%
Haa Dhaalu	3,305	-7.19%	3,459	-3.05%	6,764	-5.12%	3,225	-9.44%	3,452	-3.25%	6,677	-6.34%
Shaviyani	2,182	0.28%	2,355	4.81%	4,537	2.58%	2,189	0.60%	2,353	4.72%	4,542	2.69%
Noonu	2,082	-4.54%	2,133	-4.09%	4,215	-4.31%	2,130	-2.34%	2,218	-0.27%	4,348	-1.29%
Raa	2,994	2.85%	3,214	3.18%	6,208	3.02%	3,091	6.18%	3,265	4.82%	6,356	5.48%
Baa	1,756	-6.74%	2,152	0.42%	3,908	-2.93%	1,698	-9.82%	2,077	-3.08%	3,775	-6.23%
Lhaviyani	1,656	-8.46%	1,722	-8.40%	3,378	-8.43%	1,557	-13.93%	1,640	-12.77%	3,197	-13.34%
Kaafu	1,286	-10.38%	1,427	-14.70%	2,713	-12.71%	1,425	-0.70%	1,620	-3.17%	3,045	-2.03%
Alifu Alifu	759	-2.44%	819	-3.53%	1,578	-3.01%	717	-7.84%	828	-2.47%	1,545	-5.04%
Alifu Dhaalu	1,258	-0.08%	1,453	0.07%	2,711	0.00%	1,263	0.32%	1,424	-1.93%	2,687	-0.89%
Vaavu	246	-16.89%	295	-11.41%	541	-13.99%	229	-22.64%	274	-17.72%	503	-20.03%
Meemu	920	-3.87%	918	-9.38%	1,838	-6.70%	853	-10.87%	891	-12.04%	1,744	-11.47%
Faafu	725	-0.82%	744	-3.63%	1,469	-2.26%	783	7.11%	815	5.57%	1,598	6.32%
Dhaalu	902	5.37%	1,000	4.93%	1,902	5.14%	878	2.57%	1,030	8.08%	1,908	5.47%
Thaa	1,830	-5.43%	1,941	-4.99%	3,771	-5.20%	1,755	-9.30%	1,969	-3.62%	3,724	-6.39%
Laamu	2,323	-0.13%	2,532	-1.09%	4,855	-0.63%	2,280	-1.98%	2,457	-4.02%	4,737	-3.05%
Gaafu Alifu	1,548	-1.15%	1,699	4.88%	3,247	1.91%	1,562	-0.26%	1,695	4.63%	3,257	2.23%
Gaafu Dhaalu	2,534	-5.48%	2,595	-2.85%	5,129	-4.17%	2,435	-9.18%	2,484	-7.00%	4,919	-8.09%
Gnaviyani	1,601	-2.50%	1,593	-3.45%	3,194	-2.98%	1,569	-4.45%	1,591	-3.58%	3,160	-4.01%
Seenu	3,740	-8.82%	3,779	-7.08%	7,519	-7.96%	3,684	-10.19%	3,692	-9.22%	7,376	-9.71%
Male'	14,931	4.19%	14,019	0.31%	28,950	2.28%	15,117	5.48%	14,190	1.54%	29,307	3.54%
TOTAL	51,493	-1.82%	52,915	-1.91%	104,408	-1.86%	51,309	-2.17%	52,905	-1.92%	104,214	-2.05%

* Change column shows the change over previous year.

ދިވެހިރާއްޖޭގެ ސަރުކާރުގެ ގެޒެޓް ގައި ބަޔާންކޮށްފައިވާ ގޮތުން
ENROLMENT TRENDS BY MALE' AND ATOLLS
 (1999 - 2004)



ಶಾಲೆಗಳಲ್ಲಿ ಗಂಡು ಮಕ್ಕಳಿಗೆ ಮತ್ತು ಹೆಣ್ಣು ಮಕ್ಕಳಿಗೆ ಸೇರಿದವರ ಸಂಖ್ಯೆ (ಮಾರ್ಚ್ 2004)
SCHOOLS' ENROLMENTS IN MALE' BY GRADE AND GENDER
(MARCH 2004)

SCHOOL	Type	NURS		LKG		UKG		GR. 1		GR. 2		GR. 3		GR. 4		GR. 5		GR. 6		GR. 7		GR. 8		GR. 9		GR. 10		GR. 11		GR. 12		Special		SUBTOTAL		TOTAL	
		F	M	F	M	F	M	F	M	F	M	F	M	F	M	F	M	F	M	F	M	F	M	F	M	F	M	F	M	F	M	F	M				
THAJUDHHEEN SCHOOL	G							120	112	106	117	110	119	111	121	109	145	113	109	123	99														792	822	1614
ISKANDHAR SCHOOL	G							208	185	192	193	143	185	160	169	149	170	133	117	192	195														1177	1214	2391
JAMAALUDHHEEN SCHOOL	G							130	138	152	151	167	160	170	161	151	165	107	127	132	146										12	19	1021	1067	2088		
KALAAFAANU SCHOOL	G							113	94	93	81	112	119	127	121	135	153	122	133	109	142													811	843	1654	
ALMADHRASATHUL ARABIYATHUL ISLAAMIYYA	G							10	5	14	17	10	16	11	27	29	30	31	37	25	46	9	16	13	20								152	214	366		
AMINIYA SCHOOL	G																					1010	925	679									2614		2614		
MAJEEDHIYYA SCHOOL	G																					530	441	265									1236		1236		
CENTRE FOR HIGHER SECONDARY EDUCATION	G																									313	361	303	322			616	683	1299			
MUHYIDDIN SCHOOL	G							17	23	27	33	28	23	36	34	37	29	36	23	31	28												212	193	405		
GHIYASUDDIN SCHOOL	G							87	84	112	114	97	87	105	124	139	148	158	173	124	78												822	808	1630		
IMAADHUDDIN SCHOOL	G							97	112	144	132	131	150	109	116	119	140	92	112	134	119									19	26	845	907	1752			
DHARUMAVANTHA SCHOOL	G																					559	415	255									1229		1229		
GALOLHU MADHRASA	C	263	244	177	183	182	189									35	37	63	56	102	56	127	61	144	87	37	38					1130	951	2081			
MAAFANNU MADHRASA	C	195	168	159	143	163	136									27	28	49	54	83	63	125	67	128	43	59	41					988	743	1731			
MADHRASATHUL AHMADHIYYA	C	165	148	193	190	194	242											54	37	113	104	195	118	181	120	85	54					1180	1013	2193			
MADHRASATHUL AMEER AHMED	C	183	197	67	95	107	115									35	29	51	50	65	52	139	122	92	60	37	58					776	778	1554			
ENGLISH PREPARATORY AND SECONDARY SCHOOL	P															2	12	21	28	46	60	106	65	240	94	214	113	25	37			654	409	1063			
MALE' ENGLISH SCHOOL	P																					184	174	338	278	351	252	200	135			1073	839	1912			
FALAAH PRE-SCHOOL	P	23	32	17	19	22	28																									62	79	141			
MADHRASATHUL ALIYA	P	13	13	19	14	15	16									11	6	12	9	18	14	15	10	20	6	17	5					140	93	233			
SHEIKH ABDURAHMAN PRE-SCHOOL	P	18	27	15	21	19	21																									52	69	121			
TOTAL		21	860	829	647	665	702	747	782	753	840	838	798	859	829	873	978	1092	1042	1065	1481	1376	2064	1826	2094	1538	1328	964	338	398	303	322	31	45	15117	14190	29307

G - Government , C - Community, P - Private

ދިވެހިސަރުކާރުގެ ގެޒެޓް ގައި ބަޔާންކުރި ގޮތުގައި ދިވެހިސަރުކާރުގެ ގެޒެޓް ގައި ބަޔާންކުރި ގޮތުގައި
 SCHOOLS' ENROLMENTS IN HAA ALIFU ATOLL BY GRADE AND GENDER
 (MARCH 2004)

SCHOOL	Type	NURS		LKG		UKG		GR. 1		GR. 2		GR. 3		GR. 4		GR. 5		GR. 6		GR. 7		GR. 8		GR. 9		GR. 10		GR. 11		GR. 12		Special		SUBTOTAL		TOTAL	
		F	M	F	M	F	M	F	M	F	M	F	M	F	M	F	M	F	M	F	M	F	M	F	M	F	M	F	M	F	M	F	M				
HA. ATHOLHU MADARSA	G							14	30	25	38	52	30	34	33	41	49	52	61	115	118	38	34	56	43	58	55							485	491	976	
HA. ATHOLHU THAULEEMEE MARUKAZU	G							33	28	36	41	33	21	33	47	41	49	48	67	92	134	63	51	79	46	74	45							532	529	1061	
MADHRASATHUL SULTHAAN MOHAMED THAKURUFAANUL AUZAM	G							6	6	9	6	12	11	8	7	16	13	7	15	11	8													69	66	135	
MADHARSATHUL AMEEN	G			4	1	1	5			3	1	4			1	1	2	4	2	2	1	4												12	24	36	
BAARASHU SCHOOL	C							17	25	19	20	16	24	25	28	30	54	31	39	29	25	20	23											187	238	425	
BERINMADHOO SCHOOL	C					4			3	2	3	2	1	3	1	1	2																	12	10	22	
IHAVANDHOO SCHOOL	C							27	36	34	33	27	46	39	47	35	26	70	80	98	87	55	51	55	60	47	47							487	513	1000	
MAARANDHOO SCHOOL	C					7	5	11	6	5	10	9	4	13	10	3	10	8	15	4	8													60	68	128	
GHAZEE MOHAMED PRESCHOOL	C	33	17	24	26	33	33																											90	76	166	
MADHRASATHUL SOBAH	C							14	9	8	12	11	8	6	11	9	10	7	14	14	30													69	94	163	
MADHRASATHUL SHAHEEDHU ALI THAKURUFAAN	C							7	4	7	9	6	7	7	10	11	10	1	8	8	8													47	56	103	
MADHRASATHUL SHEIKH IBRAHIM	C							16	23	25	17	16	20	19	20	27	33	23	35	43	47	30	30	33	21	20	20							252	266	518	
MULHADHOO SCHOOL	C	2	4	3	2	4	1	3	4	4	2	3	3	4	3	6	6	9	2	4	4													42	31	73	
MURADHOO SCHOOL	C							4	2	4	8	6	2	7	9	11	11	28	22	19	11														79	65	144
THURAAKUNU SCHOOL	C			5	8	5	4	6	8	12	3	6	4	8	6	7	8	6	12	6	11													61	64	125	
ULIGAMU SCHOOL	C							2	3	1	2	7	3	2	11	5	5	12	6	10	5														39	35	74
VASHAFARU SCHOOL	C	9	5	12	4	9	11	11	13	10	15	7	9	8	9	16	13	12	13	14	18													108	110	218	
LILY PRE-SCHOOL	C	10	9	17	14	11	10																											38	33	71	
AHADHIYYA PRE-SCHOOL	C			9	5	5	5																											14	10	24	
BAARASHU PRE-SCHOOL	C			11	10	11	7																											22	17	39	
WAFU PRE-SCHOOL	P	7	2	19	19	23	19																												49	40	89
UMAR MOHAMED PRE SCHOOL	P	5	7	10	13	10	8																												25	28	53
DHOONTHUNDI NURSERY CLASS	P	18	10																																18	10	28
ADAM SALEEM HANDHAANE PRE-SCHOOL	P	12	7	17	23	19	16																												48	46	94
ETHUMAA PRE-SCHOOL	P	4	4	8	2	3	6																												15	12	27
AHMED KHATHEEB MEMORIAL PRE-SCHOOL	P	4	2	3	3	2	3																												9	8	17
TOTAL		26	104	67	142	130	147	133	171	203	202	223	213	193	217	253	261	303	316	391	468	518	206	189	223	170	199	167						2869	2940	5809	

G - Government , C - Community, P - Private

ދިވެހިސަރުކާރުގެ ގެޒެޓް ގައި ބަޔާންކޮށްފައިވާ ގޮތަށް ދިވެހިސަރުކާރުގެ ގެޒެޓް ގައި ބަޔާންކޮށްފައިވާ ގޮތަށް

SCHOOLS' ENROLMENTS IN HAA DHAALU ATOLL BY GRADE AND GENDER
(MARCH 2004)

SCHOOL	Type	NURS		LKG		UKG		GR. 1		GR. 2		GR. 3		GR. 4		GR. 5		GR. 6		GR. 7		GR. 8		GR. 9		GR. 10		GR. 11		GR. 12		Special		SUBTOTAL		TOTAL		
		F	M	F	M	F	M	F	M	F	M	F	M	F	M	F	M	F	M	F	M	F	M	F	M	F	M	F	M	F	M	F	M					
HDH. ATHOLHU MADHARUSAA	G							18	16	17	21	17	13	16	18	19	21	21	32	30	35	39	48	29	40	29	28								235	272	507	
HDH. ATOLHU THAULEEMEE MARUKAZU	G							76	99	108	106	99	113	106	113	116	123	155	141	278	327														938	1022	1960	
JALAALUDHEEN SCHOOL	G																		68	55	89	96	103	94	123	80	2	12	14	14				399	351	750		
HANIMAADHOO SCHOOL	G							17	11	15	15	11	9	16	15	30	28	17	17	53	37	10	21	32	28										201	181	382	
AMEERU AMEEN SCHOOL	C	45	53	46	74	65	74																										156	201	357			
FARIDHOO SCHOOL	C	2	2	1	1			3	4	2	2	1	1	3	6		2																	12	18	30		
FINEY SCHOOL	C	4	8			8	3	3	3	5	4	8	7	6	5	9	6	3	10	2	2													48	48	96		
HIRIMARADHOO SCHOOL	C			4	6	5	6	3	6	11	7	4	6	1	8	1	6	4	3	9	4													42	52	94		
KUNBURUDHOO SCHOOL	C	5	3							5	3	1	1	4		1	2	2	1	1														12	17	29		
KUMUNDHOO SCHOOL	C							19	23	12	17	14	12	21	19	27	12	19	20	24	25														136	128	264	
KURIN'BEE SCHOOL	C			2	10	9	11	5	10	5	4	9	9	7	6	10	6	5	4	4	7														56	67	123	
MADHRASATHUL HUSSAINIYYA	C			7	2	2	3	1	2	6	4	1	4		2	4	4	10	11	3	7														34	39	73	
MAKUNUDHOO SCHOOL	C	9	11	7	11	17	10	14	13	20	22	23	16	14	21	14	14	20	17	50	57	21	13												209	205	414	
NAIVAADHOO SCHOOL	C	3	2	7	9	5	8	4	4	9	7	12	5	6	9	8	12	10	14	3	10														67	80	147	
NELLADHOO SCHOOL	C			9	7	7	10	10	9	12	9	4	15	13	14	12	12	8	8	21	26														96	110	206	
NEYKURENDHOO SCHOOL	C	8	6	9	7	7	8	8	12	9	8	10	19	8	14	17	26	16	20	36	60	52	47												180	227	407	
NOLHIVARAM SCHOOL	C							19	26	30	27	25	32	25	29	29	42	30	29	55	65	11	14	20	12											244	276	520
NOLHIVARAMFARU SCHOOL	C			5	7	2	1	9	5	5	4	4	7	7	6	7	7	5	3	5	4														49	44	93	
SULAIMAANIYYA PRE-SCHOOL	P	14	14	12	11	16	18																												42	43	85	
ATHFAAL PRE-SCHOOL	P	11	7	12	12	5	10																												28	29	57	
SA ADHA PRE-SCHOOL	P	18	19	14	12	9	11																												41	42	83	
TOTAL	21	119	125	135	169	157	173	209	243	266	262	245	269	250	289	303	322	325	331	642	722	222	239	184	174	152	108	2	12	14	14			3225	3452	6677		

G - Government, C - Community, P - Private

ދިވެހިސަރުކާރުގެ ގެޒެޓް ގައި ބަޔާންކުރި ގޮތުގައި ސަބަބު ފަރާތްތަކުގެ ތެރޭގައި ބަޔާންކުރި ގޮތުގައި
 SCHOOLS' ENROLMENTS IN SHAVIYANI ATOLL BY GRADE AND GENDER
 (MARCH 2004)

SCHOOL	Type	NURS		LKG		UKG		GR. 1		GR. 2		GR. 3		GR. 4		GR. 5		GR. 6		GR. 7		GR. 8		GR. 9		GR. 10		GR. 11		GR. 12		Special		SUBTOTAL		TOTAL	
		F	M	F	M	F	M	F	M	F	M	F	M	F	M	F	M	F	M	F	M	F	M	F	M	F	M	F	M	F	M	F	M				
SH. ATHOLHU MADHARUSAA	G							16	9	11	27	26	13	20	17	20	22	32	27	41	49	26	42	49	53	53	47							294	306	600	
SH. ATHOLHU THAULEEMEE MARUKAZU	G							13	16	15	19	15	14	20	23	20	25	23	31	24	47	42	51	39	49	39	35							250	310	560	
FUNADHOO SCHOOL	G							10	21	22	24	12	16	22	21	22	18	35	43	41	34	26	22	31	17	44	32							265	248	513	
BILEIFYAHI SCHOOL	C							10	8	3	11	11	3	3	9	5	9	7	10	15	17													54	67	121	
FEEVAKU SCHOOL	C							7	15	6	15	17	11	8	15	18	11	22	31	13	21	17	13	10	17	27	24							145	173	318	
FEYDHOO SCHOOL	C							8	11	7	8	6	8	5	9	10	18	17	18	20	13													73	85	158	
FIRUN'BAIDHOO SCHOOL	C							1	3		1	3	1																				4	5	9		
FOKAIDHOO SCHOOL	C							17	14	20	16	17	19	10	14	19	16	36	37	26	35	27	34	22	20	24	22							218	227	445	
GOIDHOO SCHOOL	C							13	16	6	8	5	5	9	4	3	5	6	5	21	14													63	57	120	
LHAIMAGU SCHOOL	C			4	4	6	2	8	9	6	11	11	11	14	13	9	10	13	15	15	12	19	13										105	100	205		
MAAKANDOODHOO SCHOOL	C							7	10	6	11	5	7	4	13	4	11	10	8	11	11													47	71	118	
MAAUN'GOODHOO SCHOOL	C							15	17	13	12	13	16	12	14	16	12	14	18	15	25	18	17	24	33										140	164	304
NARUDHOO SCHOOL	C			4	6	7	4	4	6	4	10	4	6	7	6	9	8	11	9	27	17													77	72	149	
NOOMARAA SCHOOL	C							12	6	7	7	5	7	16	7	9	5	5	10	2	10														56	52	108
KOMANDOO PRE-SCHOOL	C	43	40																														43	40	83		
MILANDHOO SCHOOL	C							9	22	18	15	15	14	17	16	19	13	18	16	20	27	37	53	35	35	31	37								219	248	467
ALMADRASATHUL MUNAVVARAA	P			7	5	6	5	11	7	9	11	7	6	12	11	9	10	13	12	10	16	11	6	12	12	12	12								119	113	232
VENUS PRE-SCHOOL	P			8	5	9	10																												17	15	32
TOTAL		18	43	40	23	20	28	21	161	190	153	206	172	157	179	192	192	193	262	290	301	348	223	251	222	236	230	209					2189	2353	4542		

G - Government, C - Community, P - Private

ދިވެހިސަރުކާރުގެ ގެޒެޓް ގައި ބަޔާންކުރި ގޮތުގައި
 SCHOOLS' ENROLMENTS IN RAA ATOLL BY GRADE AND GENDER
 (MARCH 2004)

SCHOOL	Type	NURS		LKG		UKG		GR. 1		GR. 2		GR. 3		GR. 4		GR. 5		GR. 6		GR. 7		GR. 8		GR. 9		GR. 10		GR. 11		GR. 12		Special		SUBTOTAL		TOTAL	
		F	M	F	M	F	M	F	M	F	M	F	M	F	M	F	M	F	M	F	M	F	M	F	M	F	M	F	M	F	M	F	M				
R. ATHOLHU MADHARUSAA	G							52	49	53	57	47	45	59	53	58	63	68	85	61	75	59	32	38	24	44	24							539	507	1046	
R. ATHOLHU THAULEEMEE MARUKAZU	G							12	20	25	17	17	24	15	22	19	32	33	40	47	49	37	37	34	45	38	46							277	332	609	
HULHUTHUFFARU SCHOOL	G							9	9	11	20	16	11	11	21	21	16	28	34	44	43	29	28	17	24	14	16							200	222	422	
ANGOLHITHEEMU SCHOOL	C							4	3	7	9	7	7	7	7	7	4	11	5	6	9													49	44	93	
ALIFUSHI SCHOOL	C							29	25	20	26	30	25	31	26	36	32	52	55	58	56	18	37	40	44	52	39							366	365	731	
FAINU SCHOOL	C							4	1	8	5	3	3	3	6	7	10	5	4	12	4													42	33	75	
INGURAIIDHOO SCHOOL	C	18	10	10	11	17	13	16	13	11	14	21	15	16	26	24	23	36	52	59	50	23	27	24	43	56	38						331	335	666		
INNAMAADHOO SCHOOL	C			3	6	6	6	4	10	8	3	7	10	8	11	7	15	11	6	13	6	10	9											77	82	159	
KINOLHAHU SCHOOL	C							8	5	4	9	6	11	5	4	11	3	7	7	4	4														45	43	88
MAAKURATH SCHOOL	C					11	11	7	15	16	22	14	22	19	14	16	22	17	32	25	30	22	24	16	16									163	208	371	
MADUVVAREE SCHOOL	C							23	31	21	27	27	24	29	20	68	70	25	50	31	33	29	20	18	26	19	16							290	317	607	
RASGETHEMU SCHOOL	C	9	6	6	9	9	7	8	9	5	7	8	4	3	9	9	14	10	15	7	5													74	85	159	
RASMAADHOO SCHOOL	C	3	4	2	6	4	5	10	6	7	6	5	4	3	9	2	15	7	13	19	18	13	8	6	8								81	102	183		
UNGOOFAARU SCHOOL	C							19	16	17	12	15	13	10	19	19	23	20	33	35	47	24	21	53	44	44	36							256	264	520	
VAADHOO SCHOOL	C							2	6	6	6	5	2	6	3	13	10	11	10	7	9														50	46	96
MEEDHOO PRE-SCHOOL	C	10	8	10	14	19	15																											39	37	76	
ALIFUSHEE PRE-SCHOOL	C	15	16	22	21	18	18																											55	55	110	
M.E.C.NURSERY CLASS	P	9	13	12	7	10	18																											31	38	69	
IBS PRE-SCHOOL	P	6	7	8	9	5	10	10	9	11	10	4	9	10	13	10	10																	64	77	141	
ABDULLA ALI PRE SCHOOL	P	2	7	3	5	5	1																											10	13	23	
BAHAARU PRE-SCHOOL	P	7	5	5	4	5	3																											17	12	29	
FATHIS PRE-SCHOOL	P	19	24	5	10	11	14																											35	48	83	
TOTAL	22	98	100	86	102	120	121	217	227	230	250	232	229	235	263	327	362	341	441	428	438	264	243	246	274	267	215						3091	3265	6356		

G - Government, C - Community, P - Private

ދިވެހިސަރުކާރުގެ ގެޒެޓްގެ ޖިނާރަލް ޕްރޮސެކިއުޓަރުގެ އޮފީހުގެ ދަށުން ޕްރެފެރެންސް ޕްރޮސެކިއުޓަރުގެ އޮފީހުގެ ދަށުން

SCHOOLS' ENROLMENTS IN ALIFU ALIFU ATOLL BY GRADE AND GENDER
(MARCH 2004)

SCHOOL	Type	NURS		LKG		UKG		GR. 1		GR. 2		GR. 3		GR. 4		GR. 5		GR. 6		GR. 7		GR. 8		GR. 9		GR. 10		GR. 11		GR. 12		Special		SUBTOTAL		TOTAL
		F	M	F	M	F	M	F	M	F	M	F	M	F	M	F	M	F	M	F	M	F	M	F	M	F	M	F	M	F	M	F	M			
AA. ATHOLHU MADHARUSAA	G							5	5	7	8	9	7	5	12	6	10	10	15	12	12	15	10	9	9	10	16							88	104	192
AA. ATHOLHU THAULEEMEE MARUKAZU	G							8	4	11	15	12	13	10	13	8	12	15	11	32	50	22	28	18	12	18	10							154	168	322
THODDOO SCHOOL	G							12	23	16	22	14	15	10	18	13	18	23	24	19	25	11	11	30	10									148	166	314
BODUFOLHU DHOO SCHOOL	C							5	12	8	7	13	13	9	3	3	9	16	21	15	14													69	79	148
HIMANDHOO SCHOOL	C							5	9	10	5	5	7	10	8	6	5	5	15	8	12													49	61	110
MAALHOS SCHOOL	C			3	6	9	2	6	8	7	10	4	7	8	3	2	8	5	5	2	5													46	54	100
MATHIVERI SCHOOL	C							7	10	5	5	9	4	7	10	7	8	10	7	7	10													52	54	106
UKULHAHU SCHOOL	C							6	10	5	11	5	7	7	10	3	9	5	16	11	12													42	75	117
HUSNA PRE-SCHOOL	P	9	2	6	5	2	5																										17	12	29	
NAARES THUTHUKUDHINGE THAULEEMU DHEY CLASS	P	1	1	1	3	5	8																											7	12	19
RASHAADHEE PRE-SCHOOL	P	7	10	9	5	6	8																											22	23	45
ULOOME PRE-SCHOOL	P	6	8	8	2	4	7																											18	17	35
KNOWLEDGE - THUTHU KUDHINGE THAULEEMU DHEYCLASS	P			3	1	2	2																											5	3	8
TOTAL		13	23	21	30	22	28	32	54	81	69	83	71	73	66	77	48	79	89	114	106	140	48	49	57	31	28	26						717	828	1545

G - Government, C - Community, P - Private

ދިވެހިސަރުކާރުގެ ގެޒެޓްގައި ވަނީ ބަޔާންކޮށްފައިވާ ގޮތުން ސަރުކާރުގެ ސަރަޙައްދުގައި ހުންނަ ފޮނިމަސް ދަރިވަރުންނަށް ފޯމް ފުރިހަމަކުރުމަށް އެދިފައިވާ ކުރުފުޅު ދަށުން ސަރުކާރުގެ ސަރަޙައްދުގައި ހުންނަ ފޮނިމަސް ދަރިވަރުންނަށް ފޯމް ފުރިހަމަކުރުމަށް އެދިފައިވާ ކުރުފުޅު ދަށުން

SCHOOLS' ENROLMENTS IN ALIFU DHAALU ATOLL BY GRADE AND GENDER
(MARCH 2004)

SCHOOL	Type	NURS		LKG		UKG		GR. 1		GR. 2		GR. 3		GR. 4		GR. 5		GR. 6		GR. 7		GR. 8		GR. 9		GR. 10		GR. 11		GR. 12		Special		SUBTOTAL		TOTAL
		F	M	F	M	F	M	F	M	F	M	F	M	F	M	F	M	F	M	F	M	F	M	F	M	F	M	F	M	F	M	F	M			
ADH. ATHOLHU THULEEMEE MARUKAZU	G							14	19	26	32	19	19	24	20	19	25	32	34	64	90	47	54	41	41	46	61					332	395	727		
ADH. ATHOLHU MADHARUSAA	G							33	42	17	13	31	19	32	30	25	34	39	52	38	55	25	17	29	27	30	32					299	321	620		
DHANGETHI SCHOOL	C	12	6	7	11	6	4	4	8	8	6	5	11	4	5	7	5	13	19	27	21	12	5	17	9	9	4					131	114	245		
DHIDHDHOO SCHOOL	C	2	5					1	1			1		3	2		2																7	10	17	
DHIGURASHU SCHOOL	C							2	4	5	8	3	9	3	5	7	5	5	7	7	15												32	53	85	
FENFUSHI SCHOOL	C							17	7	8	7	7	8	4	13	8	11	20	19	13	16	12	9	8	5	6	4					103	99	202		
HANGNAAMEEDHOO SCHOOL	C							4	9	9	15	10	5	8	11	9	9	15	13	27	24	2	12	11	8	3	5					98	111	209		
KUN'BURUDHOO SCHOOL	C	11	15					5	3	7	9	3	12	6	6	4	3	5	5	3	10											44	63	107		
MAHIBADHOO MAKTHAB	C	22	16	14	12	13	24																									49	52	101		
MANDHOO SCHOOL	C							9	4	5	8	6	4	3	4	1	3	1	4	2	4												27	31	58	
OMADHOO SCHOOL	C	6	9	8	9	6	10	13	8	8	14	13	6	11	12	9	14	13	25	22	29	11	11									120	147	267		
HANGNAAMEEDHOO PRE-SCHOOL	C	8	6	9	11	4	11																									21	28	49		
TOTAL		12	61	57	38	43	29	49	102	105	93	112	98	93	98	108	89	111	143	178	203	264	109	108	106	90	94	106					1263	1424	2687	

G - Government , C - Community, P - Private

ދިވެހިސަރުކާރުގެ ގެޒެޓްގައި އުފުލާ ފަރާތްތަކުގެ ނަމުތަކާއި ގެޒެޓްގައި އުފުލާ ފަރާތްތަކުގެ ނަމުތަކާއި
 SCHOOLS' ENROLMENTS IN VAAVU ATOLL BY GRADE AND GENDER
 (MARCH 2004)

SCHOOL	Type	NURS		LKG		UKG		GR. 1		GR. 2		GR. 3		GR. 4		GR. 5		GR. 6		GR. 7		GR. 8		GR. 9		GR. 10		GR. 11		GR. 12		Special		SUBTOTAL		TOTAL	
		F	M	F	M	F	M	F	M	F	M	F	M	F	M	F	M	F	M	F	M	F	M	F	M	F	M	F	M	F	M						
V. ATHOLHU MADHARUSAA	G							4	5	4	5	1	6	6	2	8	5	6	8	7	11	6	13	9	7	4	7					55	69	124			
V. ATHOLHU THAULEEMEE MARUKAZU	G							3	3	5	7	5	11	3	7	6	12	7	7	15	17	6	9	6	4	8	11					64	88	152			
KEYODHOO SCHOOL	C							3	6	7	10	2	4	5	6	6	6	18	14	8	14	11	15	8	12	9	8					77	95	172			
RAKEEDHOO SCHOOL	C	2	2	1	1			4	1	4	1	2	1	4	2	2	1	3	6	5	5											27	20	47			
THINADHOO SCHOOL	C	1		1		1					1	3			1																	6	2	8			
TOTAL	G	3	2	2	1	1		14	15	20	24	13	22	18	18	22	24	34	35	35	47	23	37	23	23	21	26					229	274	503			

G - Government, C - Community, P - Private

ދިވެހިރާއްޖޭގެ ކަނޑުކޮޅުތަކުގައި ފޮނުވާލެވިފައިވާ ދަރިވަރުންގެ އަދަދު

SCHOOLS' ENROLMENTS IN FAAFU ATOLL BY GRADE AND GENDER
(MARCH 2004)

SCHOOL	Type	NURS		LKG		UKG		GR. 1		GR. 2		GR. 3		GR. 4		GR. 5		GR. 6		GR. 7		GR. 8		GR. 9		GR. 10		GR. 11		GR. 12		Special		SUBTOTAL		TOTAL				
		F	M	F	M	F	M	F	M	F	M	F	M	F	M	F	M	F	M	F	M	F	M	F	M	F	M	F	M	F	M	F	M							
F. ATHOLHU MADHARUSAA	G							3	11	15	11	16	16	11	9	16	13	19	20	33	21	13	5	12	6	14	20								152	132	284			
F. ATHOLHU THAULEEMEE MARUKAZU	G							26	21	22	24	24	28	23	20	27	32	33	40	36	24	18	17	20	17	19	11								248	234	482			
BILEYDHOO SCHOOL	C							14	15	9	16	14	16	11	14	17	12	13	34	37	43	12	18	28	26	12	15									167	209	376		
DHARANBOODHOO SCHOOL	C			1	1	4	5	3	2	3	4	4	5	4	6	3	6	1	6	6	4															29	39	68		
MAGOODHOO SCHOOL	C							8	4	8	10	11	10	7	8	7	13	11	12	13	14	20	16	7	9												92	96	188	
F. MAGOODHOO NURSERY CLASS	C	9	13	6	5	5	4																													20	22	42		
F. NILANDHOO PRE-SCHOOL	C	17	16	14	16	15	10																														46	42	88	
RASHEED PRE-SCHOOL	P	15	12	5	12	9	17																															29	41	70
TOTAL	8	41	41	26	34	33	36	54	53	57	65	69	75	56	57	70	76	77	112	125	106	63	56	67	58	45	46										783	815	1598	

G - Government, C - Community, P - Private

ދިވެހިސަރުކާރުގެ ގެޒެޓް ގައި ބަޔާންކޮށްފައިވާ ގޮތުން ދިވެހިސަރުކާރުގެ ފަރާތުން ދިނުމަށް ހިމަނާފައިވާ ޖަދުވަލުތަކުގެ ތެރެއިން ބަޔާންކޮށްފައިވާ ޖަދުވަލުތަކުގެ ތެރެއިން

SCHOOLS' ENROLMENTS IN DHAALU ATOLL BY GRADE AND GENDER
(MARCH 2004)

SCHOOL	Type	NURS		LKG		UKG		GR. 1		GR. 2		GR. 3		GR. 4		GR. 5		GR. 6		GR. 7		GR. 8		GR. 9		GR. 10		GR. 11		GR. 12		Special		SUBTOTAL		TOTAL	
		F	M	F	M	F	M	F	M	F	M	F	M	F	M	F	M	F	M	F	M	F	M	F	M	F	M	F	M	F	M	F	M				
DH. ATHOLHU MADHARUSAA	G							7	16	14	23	20	14	9	22	12	21	20	26	16	26	14	21	12	23	12	13								136	205	341
DH. ATHOLHU THAULEEMEE MARUKAZU	G							10	10	18	11	8	13	9	9	12	19	24	18	37	44	32	45	39	37	30	35								219	241	460
BANDIDHOO SCHOOL	C							12	15	11	11	14	14	14	16	15	15	12	22	23	25	13	20	17	12	10	12								141	162	303
GEMENDHOO SCHOOL	C							12	9	10	11	9	8	9	7	14	14	11	15	17	10													82	74	156	
HULHUDHELI SCHOOL	C							9	7	6	5	5	12	10	14	6	10	14	15	11	12	7	11	15	9									83	95	178	
MAAENBOODHOO SCHOOL	C							8	10	9	8	7	12	10	9	12	8	11	29	21	18	12	20											90	114	204	
RIN'BUDHOO SCHOOL	C			3	3	3	4	8	6	5	9	7	6	6	3	6	8	8	12	10	8	12	8											68	67	135	
VAANEE SCHOOL	C							3	2	3	5	6	2	6	3	3	5	2	4	5	5													28	26	54	
KUDAHUVADHOO PRE-SCHOOL	C	12	20	9	15	10	11																										31	46	77		
TOTAL		9	12	20	12	18	13	15	69	75	76	83	76	81	73	83	80	100	102	141	140	148	90	125	83	81	52	60					878	1030	1908		

G - Government , C - Community, P - Private

ދިވެހިސަރުކާރުގެ ގެޒެޓް ގައި ބަޔާންކޮށްފައިވާ ގޮތެއްގައި ލަންޓިވީ ދަރިވަރުންގެ އަދަދު ހަދާ ސަރުކާރުގެ ޕްރިމަރީ ޝޯލްތަކުގެ ފުރުޞަތުތަކުގެ ދަށުން
SCHOOLS' ENROLMENTS IN LAAMU ATOLL BY GRADE AND GENDER
(MARCH 2004)

SCHOOL	Type	NURS		LKG		UKG		GR. 1		GR. 2		GR. 3		GR. 4		GR. 5		GR. 6		GR. 7		GR. 8		GR. 9		GR. 10		GR. 11		GR. 12		Special		SUBTOTAL		TOTAL	
		F	M	F	M	F	M	F	M	F	M	F	M	F	M	F	M	F	M	F	M	F	M	F	M	F	M	F	M	F	M	F	M				
L. ATHOLHU MADHARUSAA	G							15	15	8	11	16	15	12	12	14	26	20	35	30	37	26	21	25	21	25	25							191	218	409	
L. ATHOLHU THAULEEMEE MARUKAZU	G							5	12	20	15	17	21	22	24	28	26	19	41	55	61	28	40	56	65	90	93							340	398	738	
MAAVASHU SCHOOL	G							14	13	17	22	16	15	17	20	22	26	31	32	59	61	26	29	39	26	27	16							268	260	528	
MADHARUSATHUL HAMAD BIN KHALEEFA AHSANEE	G																	55	42	77	99	25	25	37	47	44	50							238	263	501	
DHANBIDHOO SCHOOL	C					9	8	9	14	11	8	7	10	13	12	14	10	13	15	9	8													85	85	170	
GAADHOO SCHOOL	C	4	3	5	4	6	5	4	5	5	6	8	6	5	7	7	6																	44	42	86	
THUNDEE SCHOOL	C							9	8	12	18	16	7	11	22	13	20																	61	75	136	
HITHADHOO SCHOOL	C			10	11	9	9	12	14	8	16	11	12	12	20	15	16	10	13	9	6													96	117	213	
ISDHOO SCHOOL	C							16	15	22	21	19	17	21	22	15	15	23	30	29	40	34	33											179	193	372	
ISDHOO-KALAIDHOO SCHOOL	C							9	8	12	5	16	10	16	6	15	18	18	15	20	12														106	74	180
KALHAIDHOO MADHRASA	C							12	8	6	7	4	9	4	10	6	11	7	17	1	19													40	81	121	
KUNHANDHOO MAKTHAB	C							4	9	9	5	10	9	9	13	14	11	16	23	28	16													90	86	176	
MAAMENDHOO SCHOOL	C			12	6	11	15	13	14	20	16	14	20	23	17	19	24	19	25	18	20	19	19	4	11	8	5							180	192	372	
MATHIMARADHOO SCHOOL	C	17	7	9	7	6	9	1	17	10	12	8	16	7	19	12	17																	70	104	174	
MUKURIMAGU MAKTHAB	C			11	7	10	10	8	10	18	10	13	10	10	12	23	29																	93	88	181	
MUNDOO SCHOOL	C			15	5	12	6	15	14	14	15	14	17	12	13	12	14	13	16	16	14													123	114	237	
SIRAAJUDHDHEEN PRE-SCHOOL	C	9	8	3	5	10	3																											22	16	38	
IRIS - THUTHUKUDHINGE THAULEEM DHEY CLASS	P	7	6	5	10	8	7																											20	23	43	
RAHMATH PRE-SCHOOL	P	4	3	14	13	16	12																											34	28	62	
TOTAL		19	41	27	84	68	97	84	146	176	192	187	189	194	194	229	229	269	244	304	351	393	158	167	161	170	194	189					2280	2457	4737		

G - Government, C - Community, P - Private

ދިވެހިސަރުކާރުގެ ގެޒެޓް ގައި ބަޔާންކޮށްފައިވާ ގޮތުން ދިވެހިރާއްޖޭގެ ޅަންދޫ ދާއިރާގެ ސަރުކާރުގެ ސުމާރީ ގޮތުން ދިވެހިރާއްޖޭގެ ސަރުކާރުގެ ސުމާރީ ގޮތުން

SCHOOLS' ENROLMENTS IN GAAFU DHAALU ATOLL BY GRADE AND GENDER
(MARCH 2004)

SCHOOL	Type	NURS		LKG		UKG		GR. 1		GR. 2		GR. 3		GR. 4		GR. 5		GR. 6		GR. 7		GR. 8		GR. 9		GR. 10		GR. 11		GR. 12		Special		SUBTOTAL		TOTAL
		F	M	F	M	F	M	F	M	F	M	F	M	F	M	F	M	F	M	F	M	F	M	F	M	F	M	F	M	F	M	F	M			
GDH. ATHOLHU MADHARUSAA	G							23	18	24	27	25	26	34	23	26	30	39	36	36	63	33	27	20	18	27	16							287	284	571
GDH. ATHOLHU THAULEEMEE MARUKAZU	G							54	58	73	65	46	81	77	77	76	62	113	115	128	122	105	99	100	82	85	75							857	836	1693
FIYOREE SCHOOL	C							12	17	13	15	23	10	15	17	17	23	15	15	19	16													114	113	227
HOADEDHOO SCHOOL	C	8	9	4	6	4	4	11	14	16	13	14	10	16	14	14	11	17	16	16	16	19	14											139	127	266
JAMAALUDDEEN MADHRASAA	C							9	6	13	21	16	13	10	10	19	22	20	16	16	12													103	100	203
MADAVELI SCHOOL	C							7	17	17	25	13	16	25	19	20	13	20	32	21	31	26	16	24	30	32	17							205	216	421
NADALLA SCHOOL	C							15	6	12	11	11	8	8	10	15	15	15	22	14	13													90	85	175
RATHAFANDHOO SCHOOL	C							3	9	7	14	7	13	15	8	14	9	8	11	5	6												59	70	129	
RATHAFANDHOO ANHENUNGE COMMITTEE NERSURY CLASS	C	4	3	5	4	5	4																										14	11	25	
HUVADHOO SCHOOL	C							10	12	19	11	14	12	18	20	25	16	12	28	32	39	10	12											140	150	290
AMEER IBRAHIM PRE-SCHOOL	P	10	11	12	16	19	14																										41	41	82	
RAULAA PRE-SCHOOL	P	13	13	10	10	10	12																										33	35	68	
M.M. PRE-SCHOOL	P		1		1	3	4																										3	6	9	
TUTORIAL PRE-SCHOOL	P	10	6	6	11	10	8																										26	25	51	
SAPPHIRE - THUTHU KUDHINGE THAULEEM DHEY CLASS	P	8	7	7	5	4	4																										19	16	35	
ULOOMIYYA PRE-SCHOOL	P	8	18	13	18	10	19																										31	55	86	
TODDLER'S PRE-SCHOOL	P	6	7	14	12	19	13																										39	32	71	
AL-RAYYAN PRE-SCHOOL	P	1	1	6	9	8	7																										15	17	32	
MAAIRA PRE-SCHOOL	P	5	7	10	10	10	8																										25	25	50	
ALKILEGEFAANU MEMORIAL PRESCHOOL	P	5	6	4	5	8	4																										17	15	32	
ROASHAN PRE-SCHOOL	P	9	7	6	7	3	5																										18	19	37	
MASAAFAA PRE-SCHOOL	P	6	4	7	5	12	14																										25	23	48	
AMHAA PRE-SCHOOL	P	4	12	11	6	10	12																										25	30	55	
MOHAMED IBRAHIM MEMORIAL PRE-SCHOOL	P	3	2	2	3	7	2																										12	7	19	
MISBAAHUL-HUDHAA SCHOOL	P																			7	9	20	26	20	55	51	56						98	146	244	
TOTAL		25	100	114	117	128	142	134	144	157	194	202	169	189	218	198	226	201	259	291	294	327	213	194	164	185	195	164					2435	2484	4919	

G - Government , C - Community, P - Private

ދިވެހިރާއްޖޭގެ ސަރުކާރުގެ ފަރާތުން ހިންގާ ފަންޓޭޝަންނަލް ފަރާތުން ހިންގާ ސެކެންޑަރީ ސަލާސަނޑަލް

SCHOOLS' ENROLMENTS IN GNAVIYANI ATOLL BY GRADE AND GENDER
(MARCH 2004)

SCHOOL	Type	NURS		LKG		UKG		GR. 1		GR. 2		GR. 3		GR. 4		GR. 5		GR. 6		GR. 7		GR. 8		GR. 9		GR. 10		GR. 11		GR. 12		Special		SUBTOTAL		TOTAL
		F	M	F	M	F	M	F	M	F	M	F	M	F	M	F	M	F	M	F	M	F	M	F	M	F	M	F	M	F	M	F	M			
GN. ATHOLHU THAULEEMEE MARUKAZU	G							45	53	29	46	57	53	55	66	79	66	70	74	112	163	172	115	89	77	140	104							848	817	1665
FUVAMULAK SCHOOL	G							30	30	29	25	20	22	36	38	30	28	28	42	65	38													238	223	461
MADHRASATHUL SHEIKH MOHAMED JAMAALUDHEEN	G							49	40	35	37	25	32	59	54	33	53	39	58	32	52													272	326	598
ZIKRAA SCHOOL	P	23	17	32	31	30	35																											85	83	168
MANHAJUL HUDHAA PRE-SCHOOL	P	11	17	9	13	23	17																											43	47	90
FOUNDATION SCHOOL	P	13	18	25	26	23	27																											61	71	132
ULAA PRE-SCHOOL	P	3	3	14	11	5	10																											22	24	46
TOTAL		7		50	55	80	81	81	89	124	123	93	108	102	107	150	158	142	147	137	174	209	253	172	115	89	77	140	104					1569	1591	3160

G - Government, C - Community, P - Private

ދިވެހިސަރުކާރުގެ ގެޒެޓް ގައި ބަޔާންކޮށްފައިވާ ގޮތުގައި
 SCHOOLS' ENROLMENTS IN SEENU ATOLL BY GRADE AND GENDER
 (MARCH 2004)

SCHOOL	Type	NURS		LKG		UKG		GR. 1		GR. 2		GR. 3		GR. 4		GR. 5		GR. 6		GR. 7		GR. 8		GR. 9		GR. 10		GR. 11		GR. 12		Special		SUBTOTAL		TOTAL		
		F	M	F	M	F	M	F	M	F	M	F	M	F	M	F	M	F	M	F	M	F	M	F	M	F	M	F	M	F	M	F	M					
S. ATHOLHU MADHARUSAA	G																	42	44	60	80	32	31	39	29	19	26							192	210	402		
S. ATHOLHU THAULEEMEE MARAUKAZU	G							61	60	62	78	87	77	80	87	78	94	86	95	89	82														543	573	1116	
FEYDHOO SCHOOL	G							25	33	34	23	29	19	35	51	43	47	34	61	70	94	29	15	36	32	36	25							371	400	771		
HITHADHOO SCHOOL	G							51	59	67	61	66	56	77	58	71	77	78	83	105	120														515	514	1029	
IRUSHAADHIYYA SCHOOL	G															36	46	33	52	57	64	23	23	36	28	33	21							218	234	452		
MUHBUDHEEN SCHOOL	G																					223	160	240	186	113	80	48	34	48	24			672	484	1156		
SHAMSUDHEEN SCHOOL	G							24	26	25	24	19	28	21	19	21	25																		110	122	232	
HULHUDHOO SCHOOL	G							14	20	19	17	16	19	12	12	15	22																		76	90	166	
MARADHOO SCHOOL	G							22	20	23	22	31	28	36	27																				112	97	209	
MARADHOO-FEYDHOO SCHOOL	G							9	11	14	18	9	20	16	18	13	15	13	21	17	12														91	115	206	
ALMADHRASATHUL ISLAMIYYA	G																	6	9			56	60											62	69	131		
ASRIYYA THUTHUKUDHINGE THAULEEMUDHEY CLASS	P			9	3	5	3																											14	6	20		
MEDHUVALU SCHOOL	P	41	45	51	52	61	47																											153	144	297		
NOORANEE SCHOOL	P	10	16	17	37	40	22	7	12	7	5	6	6	9	8	6	11	8	10	17	25													127	152	279		
ADDU COMPREHENSIVE SCHOOL	P																					23	37	34	51	51	50							108	138	246		
SAEEDHIYYA PRE-SCHOOL	P	24	28	28	25	26	30																												78	83	161	
SHAREEFEE PRE-SCHOOL	P	6	5	15	7	11	8																												32	20	52	
NASRIYYA PRE-SCHOOL	P	8	4	18	19	12	17																												38	40	78	
KUDHIMAA PRE-SCHOOL	P	44	44	21	27	25	27																												90	98	188	
SHEIKH HUSSAIN RAHA PRESCHOOL	P	1	1	1	1	1	1																												3	3	6	
UJAALAA PRE-SCHOOL	P	8	13	11	9	8	11																												27	33	60	
AMAAN PRE-SCHOOL	P	15	25	15	21	22	21																												52	67	119	
TOTAL		21	157	181	186	201	211	187	213	241	251	248	263	253	286	280	283	337	300	375	415	477	386	326	385	326	252	202	48	34	48	24			3684	3692	7376	

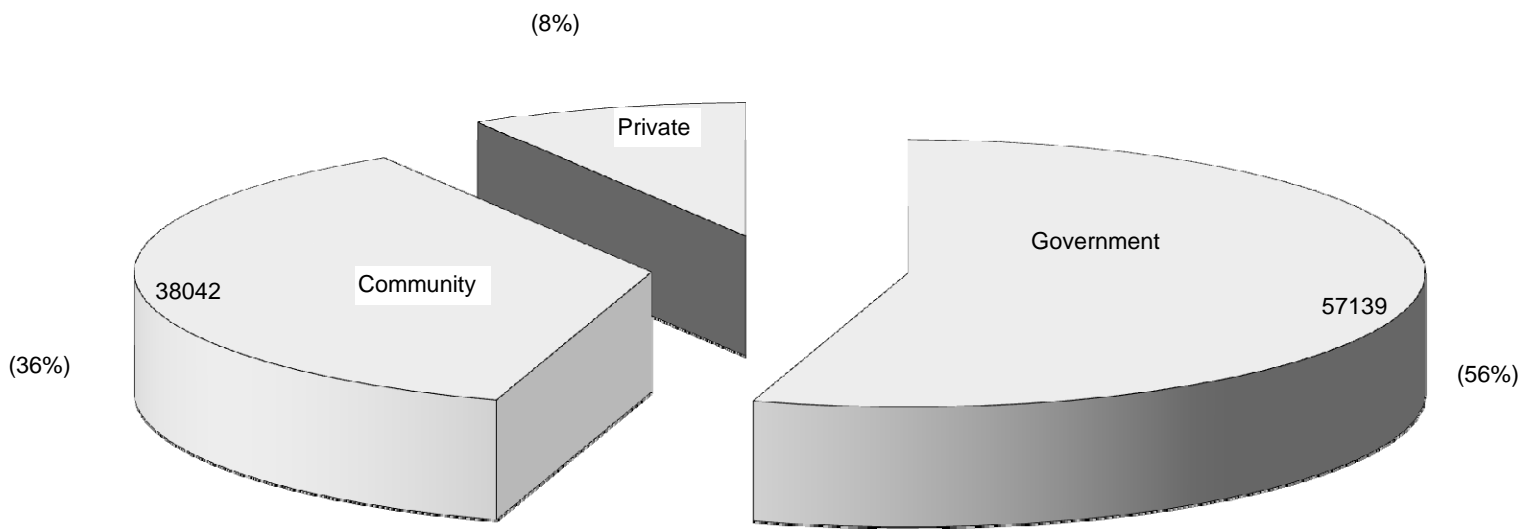
G - Government , C - Community, P - Private

ދިވެހިރާއްޖޭގެ ސަރުކާރުގެ ގެޒެޓް ނިއުސްޕޭޕަރުގައި ބަޔާންކޮށްފައިވާ ގޮތުން

NUMBER OF SCHOOLS AND ENROLMENTS OF MALE' AND ATOLLS BY PROVISION
(MARCH 2004)

Name of Atoll	GOVERNMENT				COMMUNITY				PRIVATE				TOTAL			
	Schools	Female	Male	Total	Schools	Female	Male	Total	Schools	Female	Male	Total	Schools	Female	Male	Total
Haa Alifu	4	1098	1110	2208	16	1607	1686	3293	6	164	144	308	26	2869	2940	5809
Haa Dhaalu	4	1773	1826	3599	14	1341	1512	2853	3	111	114	225	21	3225	3452	6677
Shaviyani	3	809	864	1673	13	1244	1361	2605	2	136	128	264	18	2189	2353	4542
Noonu	4	1122	1179	2301	14	952	966	1918	3	56	73	129	21	2130	2218	4348
Raa	3	1016	1061	2077	14	1918	2016	3934	5	157	188	345	22	3091	3265	6356
Baa	3	931	1160	2091	11	677	785	1462	3	90	132	222	17	1698	2077	3775
Lhaviyani	4	1301	1388	2689	4	202	201	403	1	54	51	105	9	1557	1640	3197
Kaafu	3	382	450	832	10	949	1045	1994	4	94	125	219	17	1425	1620	3045
Alifu Alifu	3	390	438	828	5	258	323	581	5	69	67	136	13	717	828	1545
Alifu Dhaalu	2	631	716	1347	10	632	708	1340					12	1263	1424	2687
Vaavu	2	119	157	276	3	110	117	227					5	229	274	503
Meemu	2	307	303	610	7	512	534	1046	2	34	54	88	11	853	891	1744
Faafu	2	400	366	766	5	354	408	762	1	29	41	70	8	783	815	1598
Dhaalu	2	355	446	801	7	523	584	1107					9	878	1030	1908
Thaa	6	1175	1337	2512	10	494	549	1043	2	86	83	169	18	1755	1969	3724
Laamu	4	1037	1139	2176	13	1189	1267	2456	2	54	51	105	19	2280	2457	4737
Gaafu Alifu	2	567	650	1217	8	835	888	1723	6	160	157	317	16	1562	1695	3257
Gaafu Dhaalu	2	1144	1120	2264	8	864	872	1736	15	427	492	919	25	2435	2484	4919
Gnaviyani	3	1358	1366	2724					4	211	225	436	7	1569	1591	3160
Seenu	11	2962	2908	5870					11	722	784	1506	22	3684	3692	7376
Male'	12	9062	9216	18278	4	4074	3485	7559	5	1981	1489	3470	21	15117	14190	29307
TOTAL	81	27939	29200	57139	176	18735	19307	38042	80	4635	4398	9033	337	51309	52905	104214

වහරයන්ගේ විද්‍යාල වර්ගය අනුව බෙදාහැරීමේ වාර්තාව
DISTRIBUTION OF ENROLMENT BY TYPE OF SCHOOLS
(MARCH 2004)

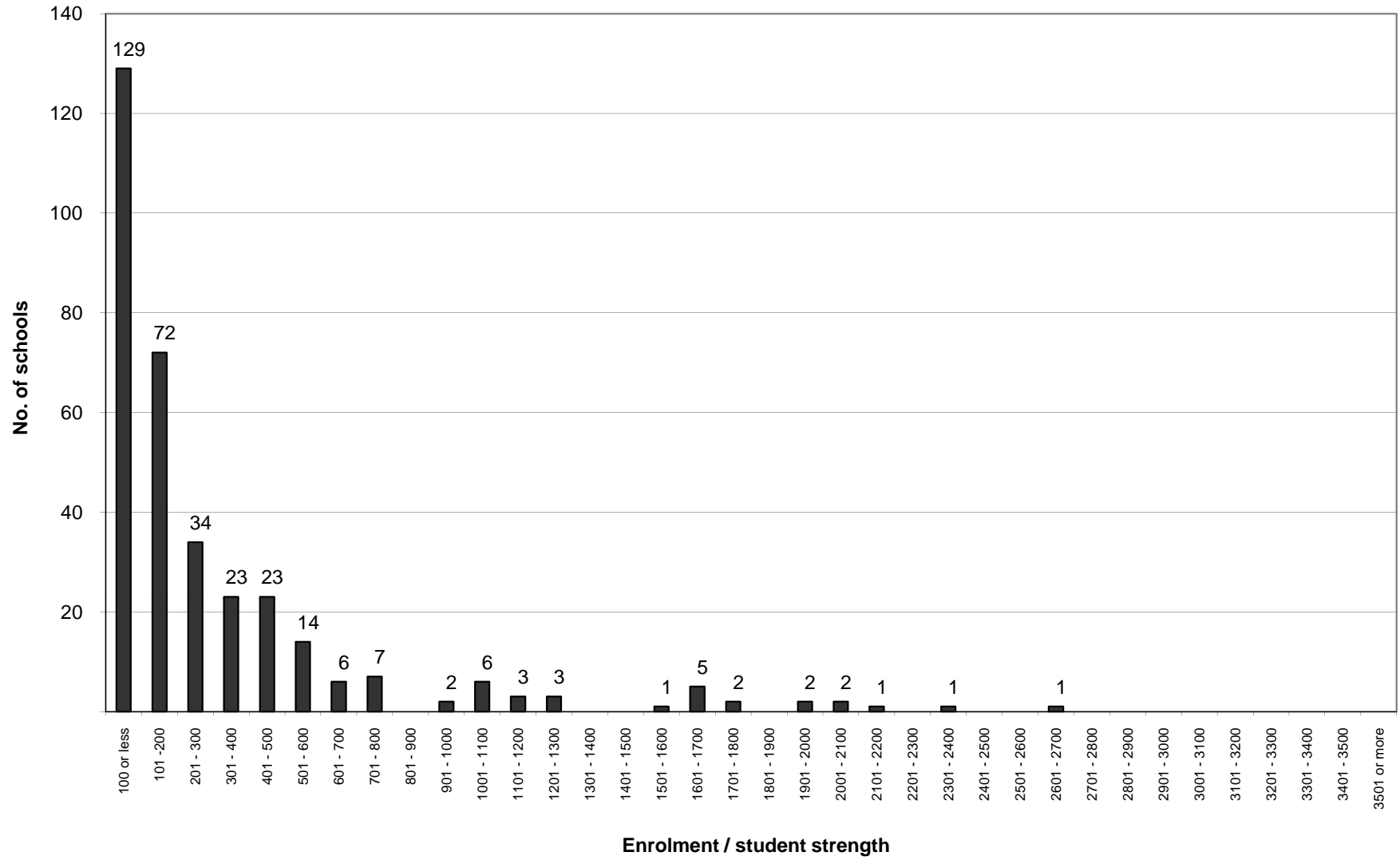


የኢትዮጵያ ጥቅም ስራ ሚኒስቴር
የትምህርትና የሥነ-ምግባር ሚኒስቴር

FREQUENCY DISTRIBUTION OF SCHOOLS BY SIZE OF ENROLMENT
(MARCH 2004)

Enrolment Category	No. of schools	Percentage	Cumulative total	Cumulative Percentage
Schools with 100 or less students	129	38.28	129	38.28
Schools with 101 - 200 students	72	21.36	201	59.64
Schools with 201 - 300 students	34	10.09	235	69.73
Schools with 301 - 400 students	23	6.82	258	76.56
Schools with 401 - 500 students	23	6.82	281	83.38
Schools with 501 - 600 students	14	4.15	295	87.54
Schools with 601 - 700 students	6	1.78	301	89.32
Schools with 701 - 800 students	7	2.08	308	91.39
Schools with 801 - 900 students	0	0.00	308	91.39
Schools with 901 - 1000 students	2	0.59	310	91.99
Schools with 1001 - 1100 students	6	1.78	316	93.77
Schools with 1101 - 1200 students	3	0.89	319	94.66
Schools with 1201 - 1300 students	3	0.89	322	95.55
Schools with 1301 - 1400 students	0	0.00	322	95.55
Schools with 1401 - 1500 students	0	0.00	322	95.55
Schools with 1501 - 1600 students	1	0.30	323	95.85
Schools with 1601 - 1700 students	5	1.48	328	97.33
Schools with 1701 - 1800 students	2	0.59	330	97.92
Schools with 1801 - 1900 students	0	0.00	330	97.92
Schools with 1901 - 2000 students	2	0.59	332	98.52
Schools with 2001 - 2100 students	2	0.59	334	99.11
Schools with 2101 - 2200 students	1	0.30	335	99.41
Schools with 2201 - 2300 students	0	0.00	335	99.41
Schools with 2301 - 2400 students	1	0.30	336	99.70
Schools with 2401 - 2500 students	0	0.00	336	99.70
Schools with 2501 - 2600 students	0	0.00	336	99.70
Schools with 2601 - 2700 students	1	0.30	337	100.00
Schools with 2701 - 2800 students	0	0.00	337	100.00
Schools with 2801 - 2900 students	0	0.00	337	100.00
Schools with 2901 - 3000 students	0	0.00	337	100.00
Schools with 3001 - 3100 students	0	0.00	337	100.00
Schools with 3101 - 3200 students	0	0.00	337	100.00
Schools with 3201 - 3300 students	0	0.00	337	100.00
Schools with 3301 - 3400 students	0	0.00	337	100.00
Schools with 3401 - 3500 students	0	0.00	337	100.00
Schools with 3501 or more students	0	0.00	337	100.00
TOTAL	337	100.00		

NUMBER OF SCHOOLS BY SIZE OF ENROLMENT
(MARCH 2004)



(2004 මාර්ච් මාසයේ) පාලිත පාසලවල සිසුන්ගේ සංඛ්‍යාව මහලු සහ මට්ටම් අනුව

NUMBER OF GOVERNMENT SCHOOLS AND THEIR ENROLMENTS BY MALE' AND ATOLLS AND LEVEL
(MARCH 2004)

GOVERNMENT SCHOOLS

Atoll	Pre-Primary Enrolment				Primary Enrolment				Lower Secondary Enrolment				Higher Secondary Enrolment			
	No.	Female	Male	Total	No.	Female	Male	Total	No.	Female	Male	Total	No.	Female	Male	Total
Haa Alifu	1	5	6	11	4	725	830	1555	2	368	274	642				
Haa Dhaalu					4	1303	1365	2668	3	454	435	889	1	16	26	42
Shaviyani					3	460	516	976	3	349	348	697				
Noonu					4	700	814	1514	4	422	365	787				
Raa					3	706	785	1491	3	310	276	586				
Baa					3	606	748	1354	3	313	359	672	1	12	53	65
Lhaviyani					4	979	1105	2084	3	322	283	605				
Kaafu					3	302	377	679	2	80	73	153				
Alifu Alifu					3	257	332	589	3	133	106	239				
Alifu Dhaalu					2	413	484	897	2	218	232	450				
Vaavu					2	80	106	186	2	39	51	90				
Meemu					2	203	215	418	2	104	88	192				
Faafu					2	304	290	594	2	96	76	172				
Dhaalu					2	216	272	488	2	139	174	313				
Thaa	1	29	20	49	6	724	876	1600	5	422	441	863				
Laamu					4	589	681	1270	4	448	458	906				
Gaafu Alifu					2	408	479	887	2	159	171	330				
Gaafu Dhaalu					2	774	803	1577	2	370	317	687				
Gnaviyani					3	957	1070	2027	1	401	296	697				
Seenu					7	1951	2134	4085	5	915	716	1631	1	96	58	154
Male'					8	5779	5987	11766	3	2636	2501	5137	1	616	683	1299
TOTAL	2	34	26	60	73	18436	20269	38705	58	8698	8040	16738	4	740	820	1560

ދިވެހިރާއްޖޭގެ ސަރުކާރުގެ ގެޒެޓް (2004ވަނަ އަދަދު) ގައި ޖެނެރަލް އިންފޯމޭޝަން ސެކްޝަން ގައި ބަޔާންކޮށްފައިވާ ގޮތުގައި

NUMBER OF COMMUNITY SCHOOLS AND THEIR ENROLMENTS BY MALE' AND ATOLLS AND LEVEL
(MARCH 2004)

COMMUNITY SCHOOLS

Atoll	Pre-Primary Enrolment				Primary Enrolment				Lower Secondary Enrolment				Higher Secondary Enrolment			
	No.	Female	Male	Total	No.	Female	Male	Total	No.	Female	Male	Total	No.	Female	Male	Total
Haa Alifu	9	224	180	404	12	1123	1254	2377	3	260	252	512				
Haa Dhaalu	10	300	353	653	13	937	1073	2010	3	104	86	190				
Shaviyani	2	64	56	120	12	889	987	1876	5	291	318	609				
Noonu	5	173	137	310	9	732	802	1534	2	47	27	74				
Raa	5	192	186	378	12	1259	1374	2633	7	467	456	923				
Baa	7	92	107	199	10	453	534	987	3	132	144	276				
Lhaviyani	3	153	158	311	1	49	43	92								
Kaafu	6	177	157	334	7	645	775	1420	4	127	113	240				
Alifu Alifu	1	12	8	20	5	246	315	561								
Alifu Dhaalu	6	128	149	277	8	413	487	900	4	91	72	163				
Vaavu	2	6	3	9	3	76	79	155	1	28	35	63				
Meemu	4	12	14	26	7	376	382	758	2	124	138	262				
Faafu	3	71	70	141	3	204	254	458	2	79	84	163				
Dhaalu	2	37	53	90	6	400	439	839	4	86	92	178				
Thaa	6	98	114	212	7	396	435	831								
Laamu	8	168	128	296	12	956	1071	2027	2	65	68	133				
Gaafu Alifu	2	40	54	94	8	693	735	1428	4	102	99	201				
Gaafu Dhaalu	2	30	30	60	7	723	753	1476	3	111	89	200				
Gnaviyani																
Seenu																
Male'	4	2048	2050	4098	4	677	566	1243	4	1349	869	2218				
TOTAL	87	4025	4007	8032	146	11247	12358	23605	53	3463	2942	6405				

(މިއަހަރުގެ މާރޅު ގަވާއިދުގެ ދަށުން ސަރުކާރުގެ ބޭނުންކުރާ ފުރުޞަތުތަކުގެ ތެރެއިން)

NUMBER OF PRIVATE SCHOOLS AND ENROLMENTS BY MALE' AND ATOLLS AND LEVEL
(MARCH 2004)

PRIVATE SCHOOLS

Atoll	Pre-Primary Enrolment				Primary Enrolment				Lower Secondary Enrolment				Higher Secondary Enrolment			
	No.	Female	Male	Total	No.	Female	Male	Total	No.	Female	Male	Total	No.	Female	Male	Total
Haa Alifu	6	164	144	308												
Haa Dhaalu	3	111	114	225												
Shaviyani	2	30	25	55	1	71	73	144	1	35	30	65				
Noonu	4	56	73	129												
Raa	5	112	137	249	1	45	51	96								
Baa	3	90	132	222												
Lhaviyani	1	54	51	105												
Kaafu	4	94	125	219												
Alifu Alifu	5	69	67	136												
Alifu Dhaalu																
Vaavu																
Meemu	2	34	54	88												
Faafu	1	29	41	70												
Dhaalu																
Thaa	2	86	83	169												
Laamu	2	54	51	105												
Gaafu Alifu	6	160	157	317												
Gaafu Dhaalu	14	329	346	675		7	9	16	1	91	137	228				
Gnaviyani	4	211	225	436												
Seenu	8	554	569	1123	1	60	77	137	1	108	138	246				
Male'	3	161	191	352	3	294	303	597	3	1501	958	2459	1	25	37	62
TOTAL	75	2398	2585	4983	6	477	513	990	6	1735	1263	2998	1	25	37	62

(අධ්‍යාපන දෙපාර්තමේන්තුවේ විද්‍යාල සංඛ්‍යාව සහ පිරිමින්ගේ සාහසිකයන්ගේ සංඛ්‍යාව)

NUMBER OF SCHOOLS AND ENROLMENT BY MALE' AND ATOLLS AND LEVEL
(MARCH 2004)

GOVERNMENT, COMMUNITY AND PRIVATE SCHOOLS

Atoll	Pre-Primary Enrolment				Primary Enrolment				Lower Secondary Enrolment				Higher Secondary Enrolment			
	No.	Female	Male	Total	No.	Female	Male	Total	No.	Female	Male	Total	No.	Female	Male	Total
Haa Alifu	16	393	330	723	16	1848	2084	3932	5	628	526	1154				
Haa Dhaalu	13	411	467	878	17	2240	2438	4678	6	558	521	1079	1	16	26	42
Shaviyani	4	94	81	175	16	1420	1576	2996	9	675	696	1371				
Noonu	9	229	210	439	13	1432	1616	3048	6	469	392	861				
Raa	10	304	323	627	16	2010	2210	4220	10	777	732	1509				
Baa	10	182	239	421	13	1059	1282	2341	6	445	503	948	1	12	53	65
Lhaviyani	4	207	209	416	5	1028	1148	2176	3	322	283	605				
Kaafu	10	271	282	553	10	947	1152	2099	6	207	186	393				
Alifu Alifu	6	81	75	156	8	503	647	1150	3	133	106	239				
Alifu Dhaalu	6	128	149	277	10	826	971	1797	6	309	304	613				
Vaavu	2	6	3	9	5	156	185	341	3	67	86	153				
Meemu	6	46	68	114	9	579	597	1176	4	228	226	454				
Faafu	4	100	111	211	5	508	544	1052	4	175	160	335				
Dhaalu	2	37	53	90	8	616	711	1327	6	225	266	491				
Thaa	9	213	217	430	13	1120	1311	2431	5	422	441	863				
Laamu	10	222	179	401	16	1545	1752	3297	6	513	526	1039				
Gaafu Alifu	8	200	211	411	10	1101	1214	2315	6	261	270	531				
Gaafu Dhaalu	16	359	376	735	9	1504	1565	3069	6	572	543	1115				
Gnaviyani	4	211	225	436	3	957	1070	2027	1	401	296	697				
Seenu	8	554	569	1123	8	2011	2211	4222	6	1023	854	1877	1	96	58	154
Male'	7	2209	2241	4450	15	6750	6856	13606	10	5486	4328	9814	2	641	720	1361
TOTAL	164	6457	6618	13075	225	30160	33140	63300	117	13896	12245	26141	5	765	857	1622

ދިވެހިސަރުކާރުގެ ގެޒެޓް ގައި ބަޔާންކޮށްފައިވާ ގޮތުން 2004 ވަނަ އަހަރުގެ މާރޗް ގައި ދިވެހިސަރުކާރުގެ ގެޒެޓް ގައި ބަޔާންކޮށްފައިވާ ގޮތުން

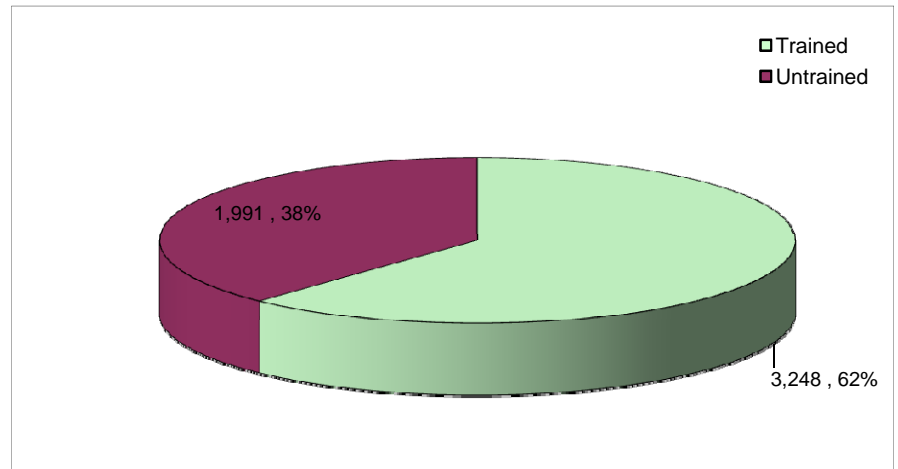
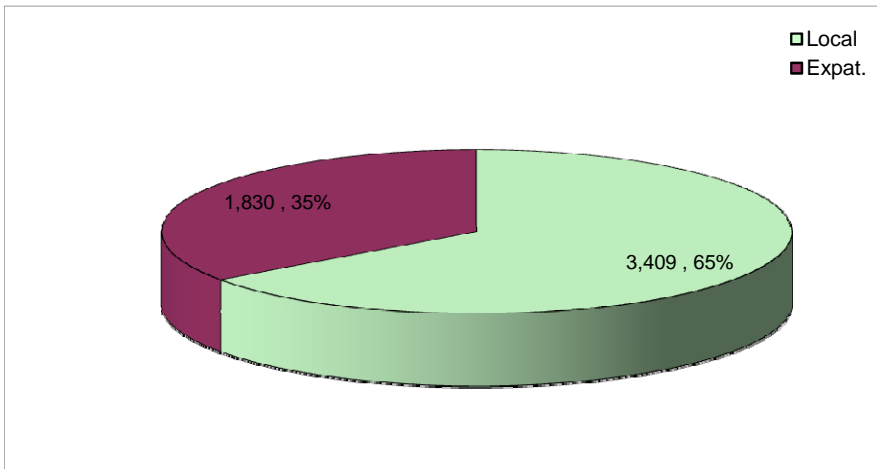
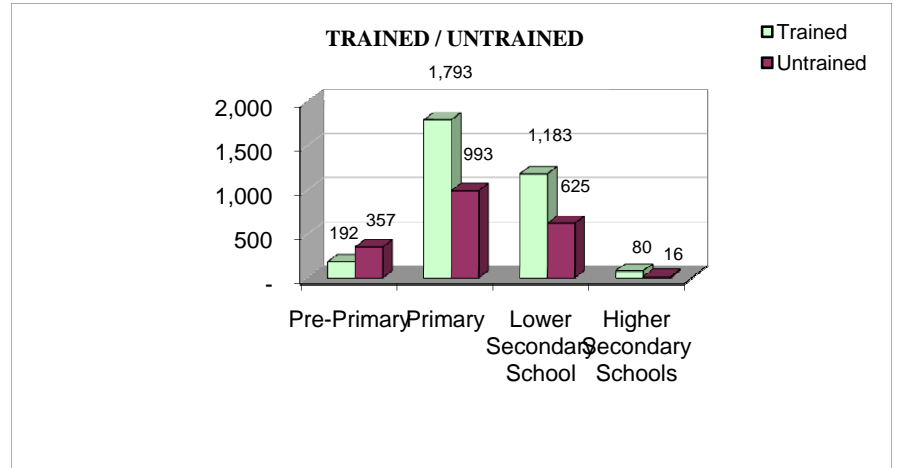
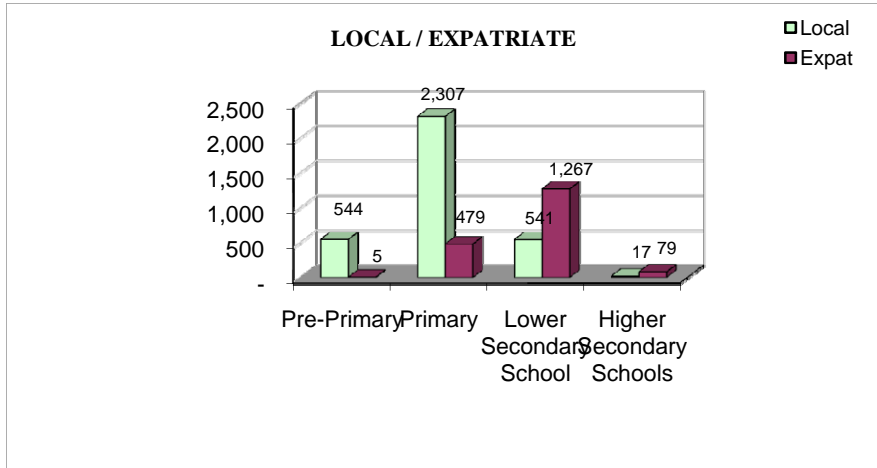
TEACHERS SERVING AT DIFFERENT LEVELS, BY JOB CATEGORIES
(MARCH 2004)

	Permanant																Temporary				Total						
	Trained								Untrained								Local		Expat		Local		Expat		Local & Expat		
	Graduate				Non-Graduate				Graduate				Non-Graduate														
	Local		Expat		Local		Expat		Local		Expat		Local		Expat		Local		Expat								
F	M	F	M	F	M	F	M	F	M	F	M	F	M	F	M	F	M	F	M	F	M	F	M	F	M	F	M
Republic																											
Pre-Primary	1	-	1	-	184	4	1	1	1	-	-	-	140	12	1	-	181	21	1	-	507	37	4	1	549		
Primary (Grades 1 - 7)	3	9	115	94	####	421	61	50	1	7	42	61	102	84	10	17	446	194	10	19	####	715	238	241	2,786		
Lower Secondary School (Grades 8 - 10)	38	47	211	418	179	116	49	125	5	30	108	242	18	22	15	43	39	47	16	40	279	262	399	868	1,808		
Higher Secondary Schools (Grades 11 - 12)	3	3	20	45	2	6	-	1	-	1	2	5	-	-	-	-	-	2	2	4	5	12	24	55	96		
Subtotals by Sex	45	59	347	557	####	547	111	177	7	38	152	308	260	118	26	60	666	264	29	63	####	####	665	####	5,239		
Atoll																											
Pre-Primary	1	-	1	-	106	4	1	1	1	-	-	-	113	11	-	-	177	21	-	-	398	36	2	1	437		
Primary (Grades 1 - 7)	1	6	83	82	716	386	26	41	-	3	39	48	80	77	9	17	440	184	6	12	####	656	163	200	2,256		
Lower Secondary School (Grades 8 - 10)	23	33	130	313	85	76	31	94	1	18	77	187	8	18	14	42	6	15	5	18	123	160	257	654	1,194		
Higher Secondary Schools (Grades 11 - 12)	-	2	11	17	2	1	-	1	-	1	2	5	-	-	-	-	-	-	-	-	2	4	13	23	42		
Subtotals by Sex	25	41	225	412	909	467	58	137	2	22	118	240	201	106	23	59	623	220	11	30	####	856	435	878	3,929		
Male																											
Pre-Primary	-	-	-	-	78	-	-	-	-	-	-	-	27	1	1	-	4	-	1	-	109	1	2	-	112		
Primary (Grades 1 - 7)	2	3	32	12	324	35	35	9	1	4	3	13	22	7	1	-	6	10	4	7	355	59	75	41	530		
Lower Secondary School (Grades 8 - 10)	15	14	81	105	94	40	18	31	4	12	31	55	10	4	1	1	33	32	11	22	156	102	142	214	614		
Higher Secondary Schools (Grades 11 - 12)	3	1	9	28	-	5	-	-	-	-	-	-	-	-	-	-	-	2	2	4	3	8	11	32	54		
Subtotals by Sex	20	18	122	145	496	80	53	40	5	16	34	68	59	12	3	1	43	44	18	33	623	170	230	287	1,310		
Subtotals by Local/Expat.	104		904		1952		288		45		460		378		86		930		92		3409		1830				
Subtotals by Graduate/Non-graduate	1008				2240				505				464														
Subtotals by Trained/Untrained	3248								969																		
Subtotals by Permanent/Temporary	4217																1022										
Grand Total																									5,239		

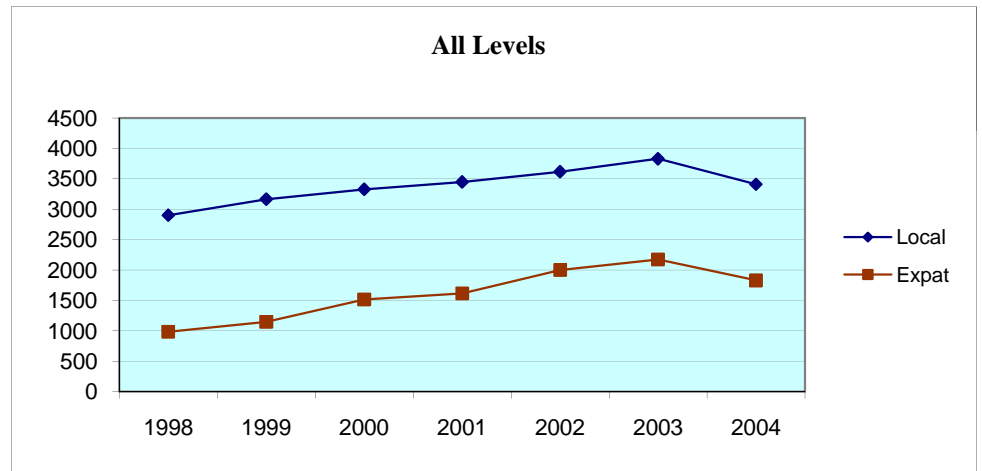
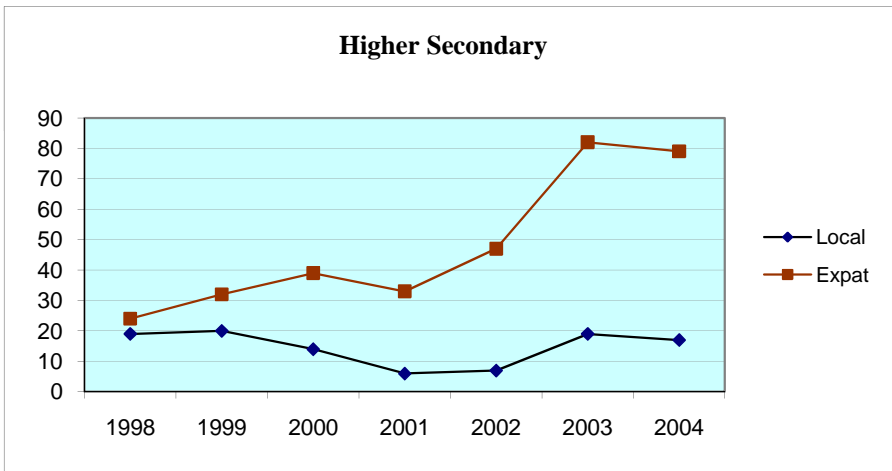
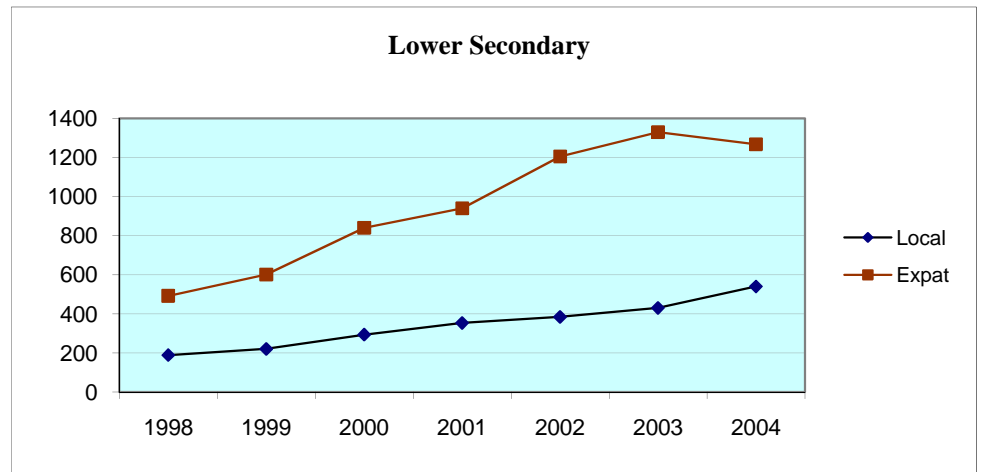
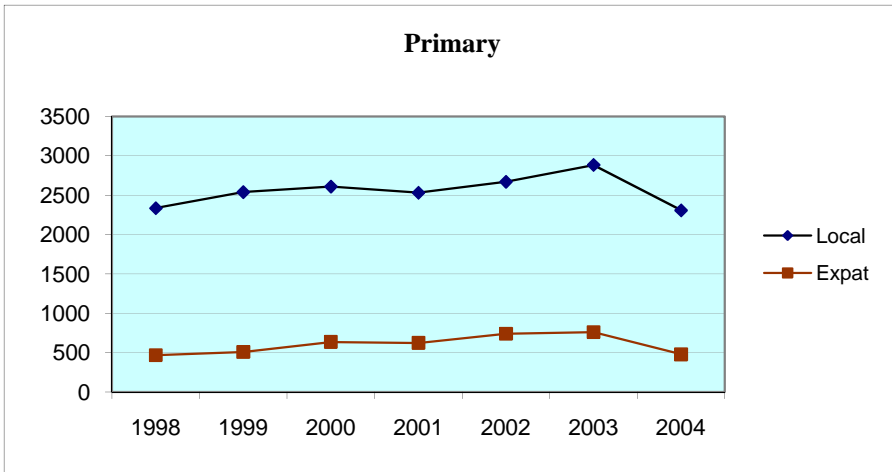
* This table does not include supervisors, assistant headmasters, headmasters, assistant principals and principals who may teach in addition to their administrative duties. Schools overlap in levels. Overlapping teachers have been enumerated in the level the teacher takes most periods.

مدرسات و معلمات المدارس و المعلمات في مختلف المستويات

TEACHERS SERVING AT DIFFERENT LEVELS
(MARCH 2004)



ڊاڪٽريٽي ۽ پي ايڇ ڊي ڊگري ڏانهن پڙهڻ وارا ڪوچنگ ڪيٽريگري (ڪوچنگ ڪيٽريگري)
 TEACHERS' TREND (LOCAL AND EXPATRIATE)
 1998 - 2004



ދިވެހިސަރުކާރުގެ ގެޒެޓް ގައި ބަޔާންކޮށްފައިވާ ގޮތުން

TEACHERS SERVING IN MALE' AND ATOLLS BY JOB CATEGORIES
(MARCH 2004)

Locality	Permanent																Temporary				Total				
	Trained								Untrained																
	Graduate				Non-Graduate				Graduate				Non-Graduate												
	Local		Expat		Local		Expat		Local		Expat		Local		Expat		Local		Expat		Local & Expat				
F	M	F	M	F	M	F	M	F	M	F	M	F	M	F	M	F	M	F	M	F	M	F	M	Expats	
Republic	45	59	347	557	1,405	547	111	177	7	38	152	308	260	118	26	60	666	264	29	63	2,383	1,026	665	1,165	5,239
Male'	20	18	122	145	496	80	53	40	5	16	34	68	59	12	3	1	43	44	18	33	623	170	230	287	1,310
Atolls	25	41	225	412	909	467	58	137	2	22	118	240	201	106	23	59	623	220	11	30	1,760	856	435	878	3,929
Haa Alifu	-	-	18	23	63	33	5	15	-	-	20	23	18	6	1	-	59	16	-	-	140	55	44	61	300
Haa Dhaalu	1	2	23	46	82	34	3	4	-	-	6	13	6	4	-	-	57	14	1	-	146	54	33	63	296
Shaviyani	-	3	6	26	36	53	4	9	-	-	10	30	1	6	2	11	30	22	1	1	67	84	23	77	251
Noonu	-	1	5	4	64	27	-	2	-	3	8	19	11	5	4	12	19	7	1	4	94	43	18	41	196
Raa	-	1	17	42	32	34	3	12	-	-	7	29	10	14	5	12	81	30	1	1	123	79	33	96	331
Baa	-	2	28	45	69	36	-	2	-	1	5	8	12	10	-	-	21	5	-	2	102	54	33	57	246
Lhaviyani	13	20	8	27	53	14	-	1	-	-	-	-	4	6	-	-	30	6	-	1	100	46	8	29	183
Kaafu	-	-	9	7	33	33	2	7	1	5	5	8	8	4	-	-	39	9	-	-	81	51	16	22	170
Alifu Alifu	-	-	3	8	16	9	1	3	-	-	-	2	10	5	3	8	22	5	1	1	48	19	8	22	97
Alifu Dhaalu	-	1	7	6	35	10	2	-	-	-	2	16	7	1	1	-	25	7	1	7	67	19	13	29	128
Vaavu	1	-	3	2	9	2	-	-	-	-	2	4	5	-	-	5	7	6	-	-	22	8	5	11	46
Meemu	-	-	9	14	27	13	1	1	-	4	1	3	4	8	-	-	12	12	-	1	43	37	11	19	110
Faafu	-	1	7	11	13	15	1	-	-	-	14	11	2	1	-	-	10	2	-	-	25	19	22	22	88
Dhaalu	-	1	4	9	20	11	3	16	-	1	2	1	11	7	-	-	12	3	1	6	43	23	10	32	108
Thaa	-	-	6	15	38	29	5	28	-	2	3	5	9	4	-	1	30	15	-	-	77	50	14	49	190
Laamu	1	3	22	43	34	27	2	5	-	-	5	8	7	12	5	7	43	29	-	3	85	71	34	66	256
Gaafu Alifu	-	-	-	3	37	22	-	4	-	-	4	16	11	3	-	-	17	7	2	2	65	32	6	25	128
Gaafu Dhaalu	1	1	8	20	79	28	11	15	-	-	3	3	21	5	-	2	46	10	2	-	147	44	24	40	255
Gnaviyani	2	3	10	18	74	17	2	2	-	-	5	12	15	2	-	-	12	-	-	-	103	22	17	32	174
Seenu	6	2	32	43	95	20	13	11	1	6	16	29	29	3	2	1	51	15	-	1	182	46	63	85	376

This table does not include supervisors, assistant headmasters, headmasters, assistant principals and principals who may teach in addition to their administrative duties.
This table includes pre-primary teachers

ދިވެހިރާއްޖޭގެ ސަރުކާރުގެ ގެޒެޓް (ދިވެހިރާއްޖޭގެ ސަރުކާރުގެ ގެޒެޓް)

SCHOOLS, ENROLMENT AND TEACHERS BY MALE' AND ATOLLS
(MARCH 2004)

Locality	Schools		Students (Both Sexes)	Teachers			Student Teacher Ratio (Trained Teachers)
	Enrol <500	Enrol >=500		Total	Trained	Untrained	
Republic	261	57	104,214	5,239	3,248	1,991	32.09
Male'	5	16	29,307	1,310	974	336	30.09
Atolls	256	41	74,907	3,929	2,274	1,655	32.94
Haa Alifu	22	4	5,809	300	157	143	37.00
Haa Dhaalu	16	4	6,677	296	195	101	34.24
Shaviyani	15	3	4,542	251	137	114	33.15
Noonu	14	3	4,348	196	103	93	42.21
Raa	13	6	6,356	331	141	190	45.08
Baa	15	2	3,775	246	182	64	20.74
Lhaviyani	7	2	3,197	183	136	47	23.51
Kaafu	11	1	3,045	170	91	79	33.46
Alifu Alifu	13		1,545	97	40	57	38.63
Alifu Dhaalu	10	2	2,687	128	61	67	44.05
Vaavu	5		503	46	17	29	29.59
Meemu	10		1,744	110	65	45	26.83
Faafu	5		1,598	88	48	40	33.29
Dhaalu	9		1,908	108	64	44	29.81
Thaa	16	2	3,724	190	121	69	30.78
Laamu	15	3	4,737	256	137	119	34.58
Gaafu Alifu	14	1	3,257	128	66	62	49.35
Gaafu Dhaalu	23	2	4,919	255	163	92	30.18
Gnaviyani	5	2	3,160	174	128	46	24.69
Seenu	18	4	7,376	376	222	154	33.23

This table does not include supervisors, assistant headmasters, headmasters, assistant principals and principals who may teach in addition to their administrative duties.

This table includes pre-primary teachers

© 2004, Ministry of Education, Republic of Maldives
ISBN 99915-61-29-3
Policy Planning and Research Section
Ministry of Education
Ghaazee Building, Male' 20-05, Republic of Maldives.
Tel: (960) 323261, 323262 Fax: (960) 321201
E-mail: e_sec@thauleem.net
URL: <http://www.moe.gov.mv>